

SPATA4 Antibody

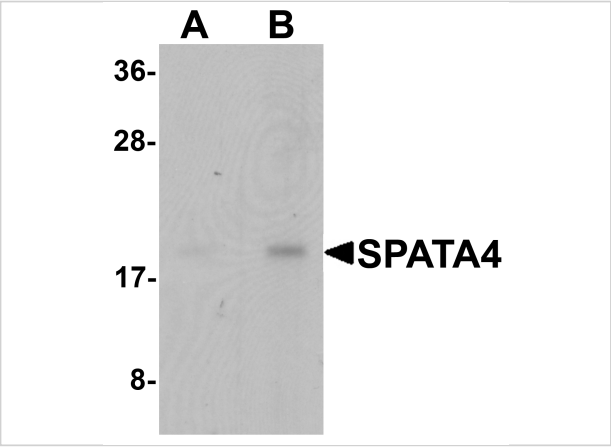
CATALOG NUMBER: 6553

Specifications

Host Species	Rabbit
Species Reactivity	Human, Mouse
Immunogen	SPATA4 antibody was raised against an 18 amino acid synthetic peptide near the carboxy terminus of human SPATA4. The immunogen is located within amino acids 200 - 250 of SPATA4.
Conjugate	Unconjugated
Tested Applications	ELISA, IF, IHC-P, WB
User Note	Optimal dilutions for each application to be determined by the researcher.
Specificity	At least two isoforms of SPATA4 are known to exist; this antibody will detect both isoforms. SPATA4 antibody is predicted to not cross-react with SPATA protein family members

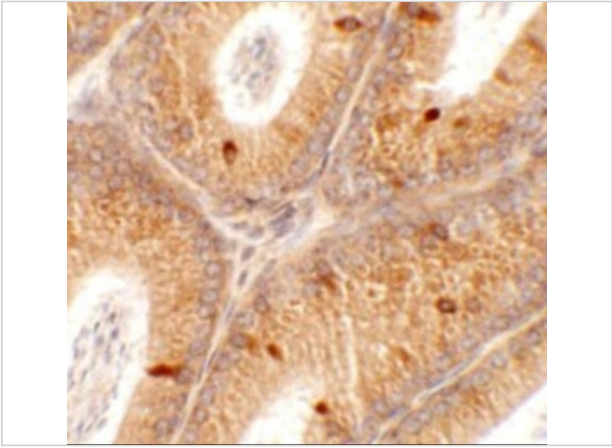
Properties

Purification	SPATA4 Antibody is affinity chromatography purified via peptide column.
Clonality	Polyclonal
Isotype	IgG
Physical State	Liquid
Buffer	SPATA4 Antibody is supplied in PBS containing 0.02% sodium azide.
Concentration	1 mg/mL
Storage Conditions	SPATA4 antibody can be stored at 4°C for three months and -20°C, stable for up to one year. As with all antibodies care should be taken to avoid repeated freeze thaw cycles. Antibodies should not be exposed to prolonged high temperatures.



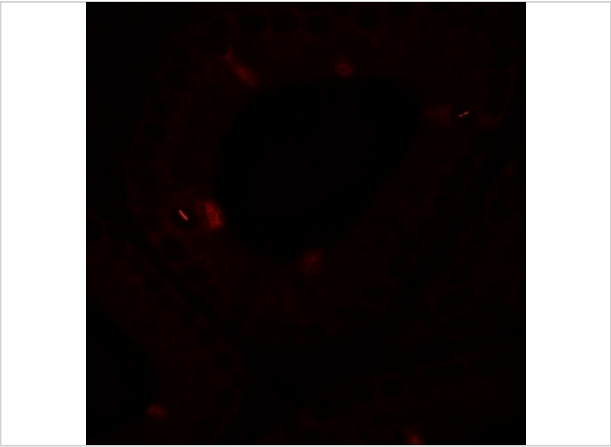
SPATA4 Antibody 1

Western blot analysis of SPATA4 in mouse stomach tissue lysate with SPATA4 antibody at (A) 1 and (B) 2 µg/mL.



SPATA4 Antibody 2

Immunohistochemistry of SPATA4 in mouse testis tissue with SPATA4 antibody at 2.5 µg/mL.



SPATA4 Antibody 3

Immunofluorescence of SPATA4 in mouse testis tissue with SPATA4 antibody at 20 µg/mL.

Disclaimer

Disclaimer	Optimal dilutions/concentrations should be determined by the end user. The information provided is a guideline for product use. This product is for research use only.
------------	--

For research use only. For additional information, visit ProSci's [Terms and Conditions Page](#).