

## TLR1 Antibody

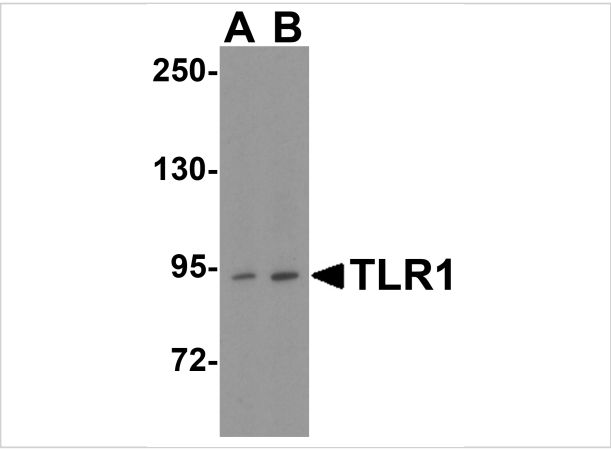
CATALOG NUMBER: 3641

### Specifications

<b>Host Species</b>	Rabbit
<b>Species Reactivity</b>	Human
<b>Immunogen</b>	TLR1 antibody was raised against a peptide corresponding to 17 amino acids near the center of human TLR1. The immunogen is located within amino acids 390 - 440 of TLR1.
<b>Conjugate</b>	Unconjugated
<b>Tested Applications</b>	ELISA, ICC, WB
<b>User Note</b>	Optimal dilutions for each application to be determined by the researcher.
<b>Predicted Molecular Weight</b>	Predicted: 87 kDa Observed: 93 kDa

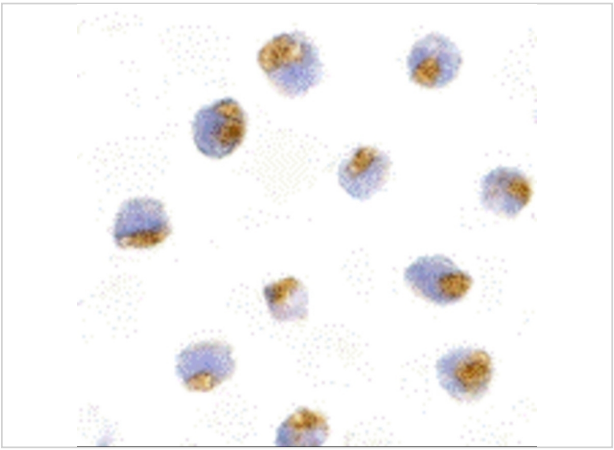
### Properties

<b>Purification</b>	TLR1 Antibody is Ion exchange chromatography purified.
<b>Clonality</b>	Polyclonal
<b>Isotype</b>	IgG
<b>Physical State</b>	Liquid
<b>Buffer</b>	TLR1 Antibody is supplied in PBS containing 0.02% sodium azide.
<b>Concentration</b>	1 mg/mL
<b>Storage Conditions</b>	TLR1 antibody can be stored at 4°C for three months and -20°C, stable for up to one year. As with all antibodies care should be taken to avoid repeated freeze thaw cycles. Antibodies should not be exposed to prolonged high temperatures.



TLR1 Antibody 1

Western blot analysis of TLR1 in THP-1 cell lysate with TLR1 antibody at (A) 1 and (B) 2 µg/mL.



TLR1 Antibody 2

Immunocytochemistry of TLR1 in Daudi with TLR1 antibody at 10 µg/mL.

Disclaimer

Disclaimer	Optimal dilutions/concentrations should be determined by the end user. The information provided is a guideline for product use. This product is for research use only.
------------	--

For research use only. For additional information, visit ProSci's [Terms and Conditions Page](#).