

ECRG2 Antibody

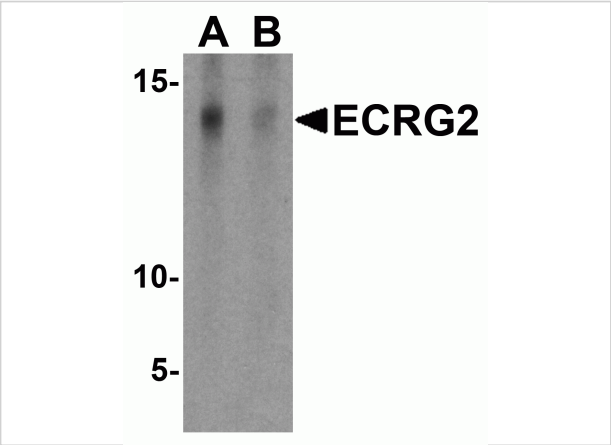
CATALOG NUMBER: 6523

Specifications

Host Species	Chicken
Species Reactivity	Human, Mouse, Rat
Immunogen	ECRG2 antibody was raised against a 16 amino acid synthetic peptide near the carboxy terminus of human ECRG2. The immunogen is located within the last 50 amino acids of ECRG2.
Conjugate	Unconjugated
Tested Applications	ELISA, IHC-P, WB
User Note	Optimal dilutions for each application to be determined by the researcher.
Specificity	ECRG2 antibody is predicted to not cross-react with other ECRG family members
Predicted Molecular Weight	Predicted: 9 kDa Observed: 14 kDa

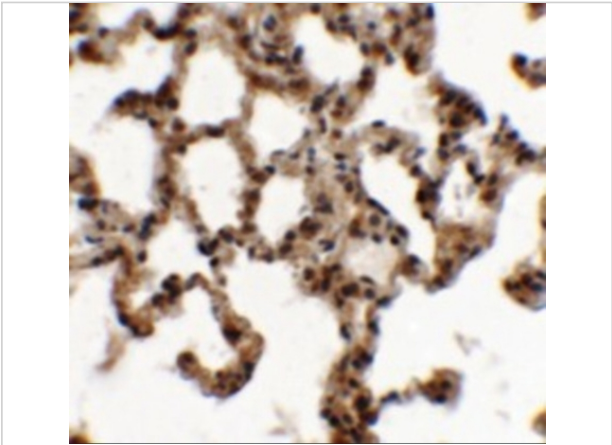
Properties

Purification	ECRG2 Antibody is affinity chromatography purified via peptide column.
Clonality	Polyclonal
Isotype	IgY
Physical State	Liquid
Buffer	ECRG2 Antibody is supplied in PBS containing 0.02% sodium azide.
Concentration	1 mg/mL
Storage Conditions	ECRG2 antibody can be stored at 4°C for three months and -20°C, stable for up to one year. As with all antibodies care should be taken to avoid repeated freeze thaw cycles. Antibodies should not be exposed to prolonged high temperatures.



ECRG2 Antibody 1

Western blot analysis of ECRG2 in A-20 cell lysate with ECRG2 antibody at 1 µg/mL in the (A) absence and (B) presence of blocking peptide.



ECRG2 Antibody 2

Immunohistochemistry of ECRG2 in rat lung tissue with ECRG2 antibody at 5 µg/mL.

Disclaimer

Disclaimer	Optimal dilutions/concentrations should be determined by the end user. The information provided is a guideline for product use. This product is for research use only.
------------	--

For research use only. For additional information, visit ProSci's [Terms and Conditions Page](#).