

DRGX Antibody

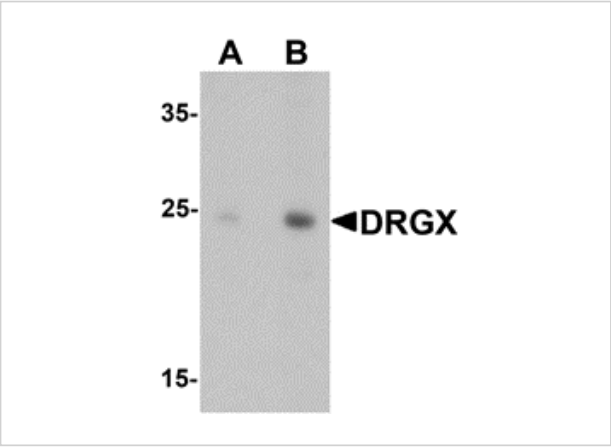
CATALOG NUMBER: 6517

Specifications

| | |
|---------------------|---|
| Host Species | Chicken |
| Species Reactivity | Human, Mouse, Rat |
| Immunogen | DRGX antibody was raised against a 19 amino acid synthetic peptide near the carboxy terminus of human DRGX. The immunogen is located within the last 50 amino acids of DRGX. |
| Conjugate | Unconjugated |
| Tested Applications | ELISA, IF, WB |
| User Note | Optimal dilutions for each application to be determined by the researcher. |
| Specificity | At least two are known to exist; DRGX antibody is predicted to not cross-react with other Homeodomain proteins. |

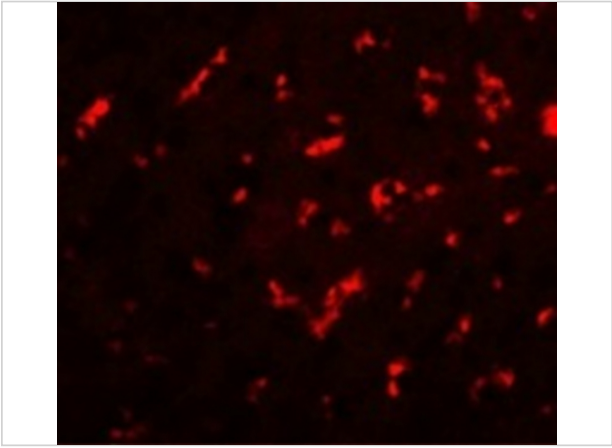
Properties

| | |
|--------------------|--|
| Purification | DRGX Antibody is affinity chromatography purified via peptide column. |
| Clonality | Polyclonal |
| Isotype | IgY |
| Physical State | Liquid |
| Buffer | DRGX Antibody is supplied in PBS containing 0.02% sodium azide. |
| Concentration | 1 mg/mL |
| Storage Conditions | DRGX antibody can be stored at 4°C for three months and -20°C, stable for up to one year. As with all antibodies care should be taken to avoid repeated freeze thaw cycles. Antibodies should not be exposed to prolonged high temperatures. |



DRGX Antibody 1

Western blot analysis of DRGX in rat liver tissue lysate with DRGX antibody at (A) 1 and (B) 2 µg/mL.



DRGX Antibody 2

Immunofluorescence of DRGX in rat liver cells with DRGX antibody at 20 µg/mL.

Disclaimer

| | |
|------------|--|
| Disclaimer | Optimal dilutions/concentrations should be determined by the end user. The information provided is a guideline for product use. This product is for research use only. |
|------------|--|

For research use only. For additional information, visit ProSci's [Terms and Conditions Page](#).