

NEUCRIN Antibody

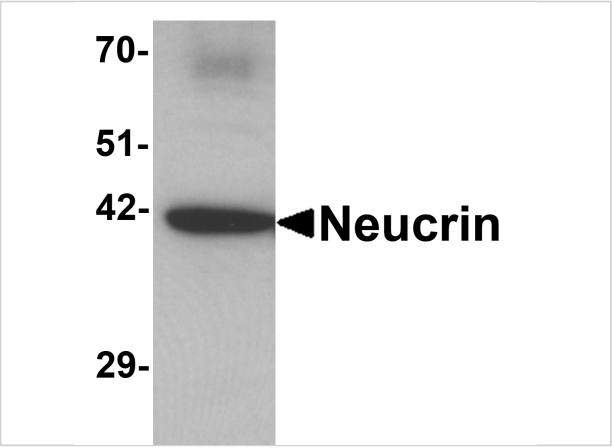
CATALOG NUMBER: 6493

Specifications

Host Species	Rabbit
Species Reactivity	Human, Mouse, Rat
Homology	Predicted species reactivity based on immunogen sequence: Chicken: (100%), Bovine: (100%)
Immunogen	Neucrin antibody was raised against a 17 amino acid synthetic peptide near the carboxy terminus of human Neucrin. The immunogen is located within the last 50 amino acids of NEUCRIN.
Conjugate	Unconjugated
Tested Applications	ELISA, IF, IHC-P, WB
User Note	Optimal dilutions for each application to be determined by the researcher.
Specificity	At least three isoforms of Neucrin are known to exist; this antibody will detect the two shorter isoforms. Neucrin antibody is predicted to not cross-react with RILP.

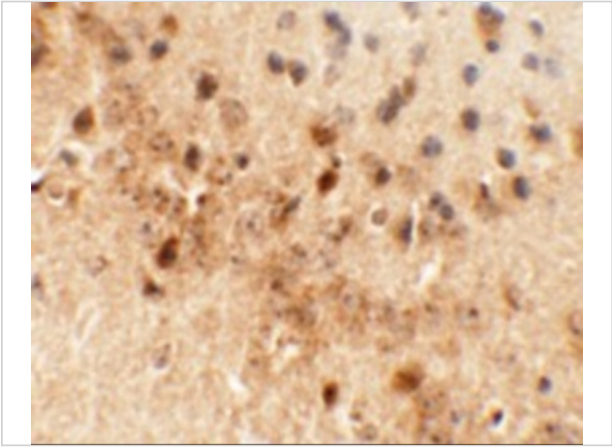
Properties

Purification	NEUCRIN Antibody is affinity chromatography purified via peptide column.
Clonality	Polyclonal
Isotype	IgG
Physical State	Liquid
Buffer	NEUCRIN Antibody is supplied in PBS containing 0.02% sodium azide.
Concentration	1 mg/mL
Storage Conditions	NEUCRIN antibody can be stored at 4°C for three months and -20°C, stable for up to one year. As with all antibodies care should be taken to avoid repeated freeze thaw cycles. Antibodies should not be exposed to prolonged high temperatures.



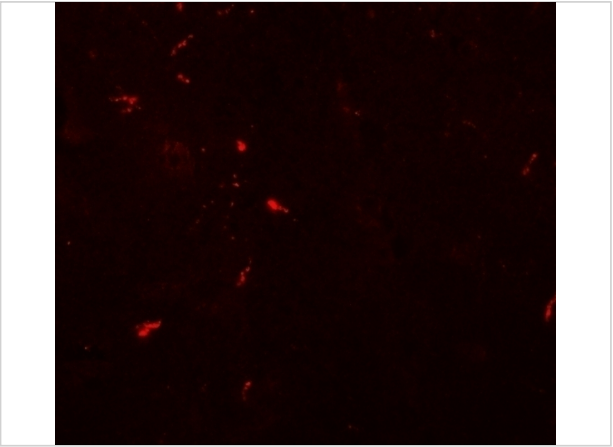
NEUCRIN Antibody 1

Western blot analysis of Neucrin in rat cerebellum tissue lysate with Neucrin antibody at 1 µg/mL.



NEUCRIN Antibody 2

Immunohistochemistry of NEUCRIN in mouse brain tissue with NEUCRIN antibody at 5 µg/mL.



NEUCRIN Antibody 3

Immunofluorescence of NEUCRIN in mouse brain tissue with NEUCRIN antibody at 20 µg/mL.

Disclaimer

Disclaimer	Optimal dilutions/concentrations should be determined by the end user. The information provided is a guideline for product use. This product is for research use only.
-------------------	--

For research use only. For additional information, visit ProSci's [Terms and Conditions Page](#).