

## LAMP-1 Antibody

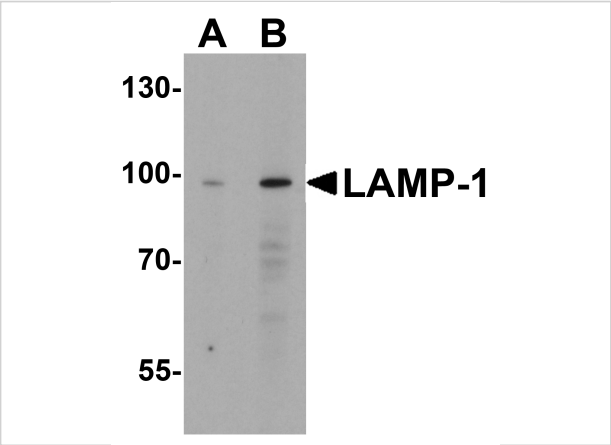
CATALOG NUMBER: 3629

### Specifications

Host Species	Rabbit
Species Reactivity	Human, Mouse, Rat
Immunogen	LAMP-1 antibody was raised against a 15 amino acid synthetic peptide from near the center of human LAMP-1. The immunogen is located within amino acids 230 - 280 of LAMP-1.
Conjugate	Unconjugated
Tested Applications	ELISA, IF, IHC-P, WB
User Note	Optimal dilutions for each application to be determined by the researcher.
Specificity	LAMP-1 antibody is predicted to not cross-react with LAMP-2. Due to extensive post-translational modification, LAMP-1 often migrates at higher than predicted molecular weight in SDS-PAGE.
Predicted Molecular Weight	Predicted: 46 kDa Observed: 95 kDa

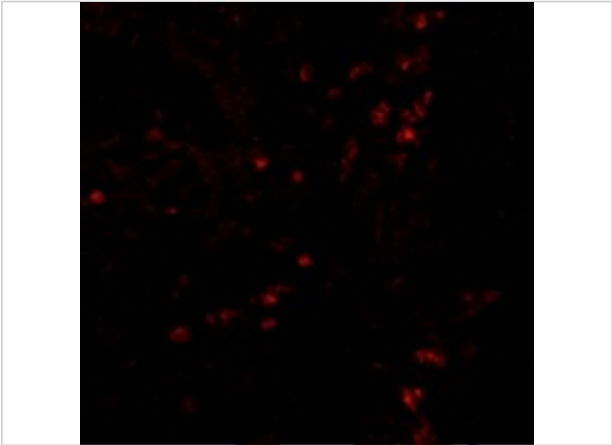
### Properties

Purification	LAMP-1 Antibody is affinity chromatography purified via peptide column.
Clonality	Polyclonal
Isotype	IgG
Physical State	Liquid
Buffer	LAMP-1 Antibody is supplied in PBS containing 0.02% sodium azide.
Concentration	1 mg/mL
Storage Conditions	LAMP-1 antibody can be stored at 4°C up to one year. Antibodies should not be exposed to prolonged high temperatures.



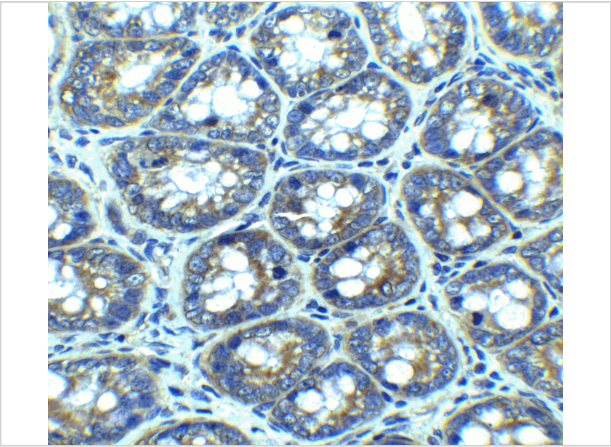
LAMP-1 Antibody 1

Western blot analysis of LAMP-1 in EL4 cell lysate with LAMP-1 antibody at (A) 1 and (B) 2 µg/mL.



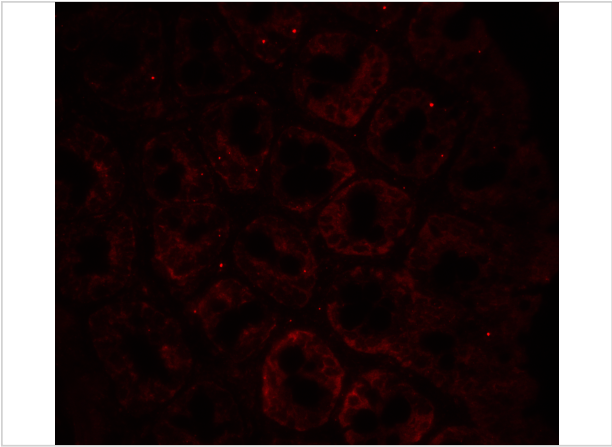
LAMP-1 Antibody 2

Immunofluorescence of LAMP-1 in human colon tissue with LAMP-1 antibody at 20 µg/mL.



LAMP-1 Antibody 4

Immunofluorescence of LAMP-1 in Human Colon cells with LAMP-1 antibody at 20 µg/mL.



LAMP-1 Antibody 5

Immunohistochemistry of LAMP-1 in rat colon tissue with LAMP-1 antibody at 2.5 µg/mL.

Disclaimer

Disclaimer	Optimal dilutions/concentrations should be determined by the end user. The information provided is a guideline for product use. This product is for research use only.
------------	--

For research use only. For additional information, visit ProSci's [Terms and Conditions Page](#).