

FXYD7 Antibody

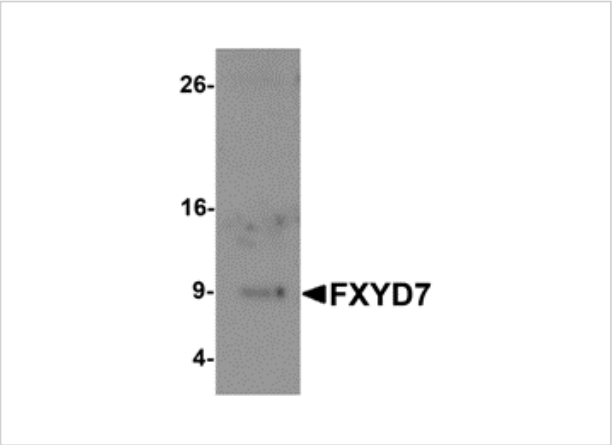
CATALOG NUMBER: 6465

Specifications

Host Species	Rabbit
Species Reactivity	Human, Mouse, Rat
Homology	Predicted species reactivity based on immunogen sequence: Bovine: (71%)
Immunogen	FXYD7 antibody was raised against a 17 amino acid synthetic peptide near the amino terminus of human FXYD7. The immunogen is located within the first 50 amino acids of FXYD7.
Conjugate	Unconjugated
Tested Applications	ELISA, IF, IHC-P, WB
User Note	Optimal dilutions for each application to be determined by the researcher.
Specificity	FXYD7 antibody is human, mouse and rat reactive. FXYDY7 antibody is predicted to not react with other members of the FXYD protein family

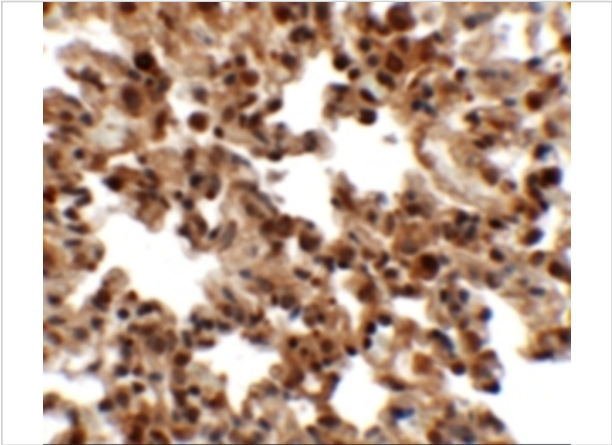
Properties

Purification	FXYD7 Antibody is affinity chromatography purified via peptide column.
Clonality	Polyclonal
Isotype	IgG
Physical State	Liquid
Buffer	FXYD7 Antibody is supplied in PBS containing 0.02% sodium azide.
Concentration	1 mg/mL
Storage Conditions	FXYD7 antibody can be stored at 4°C for three months and -20°C, stable for up to one year. As with all antibodies care should be taken to avoid repeated freeze thaw cycles. Antibodies should not be exposed to prolonged high temperatures.



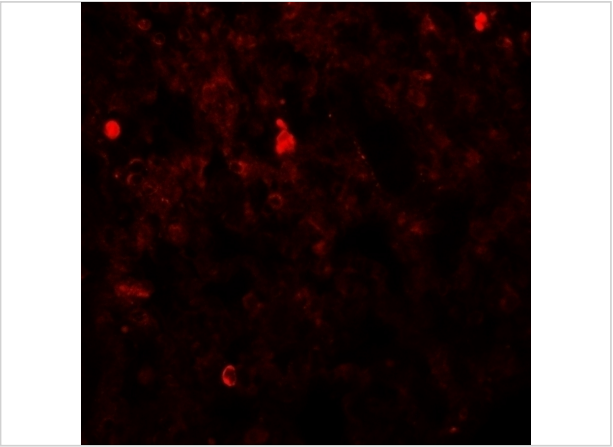
FXYP7 Antibody 1

Western blot analysis of FXYP7 in human lung tissue lysate with FXYP7 antibody at 1 µg/mL.



FXYP7 Antibody 2

Immunohistochemistry of FXYP7 in rat lung tissue with FXYP7 antibody at 2.5 µg/mL.



FXYP7 Antibody 3

Immunofluorescence of FXYP4 in rat lung tissue with FXYP4 antibody at 20 µg/mL.

Disclaimer

Disclaimer	Optimal dilutions/concentrations should be determined by the end user. The information provided is a guideline for product use. This product is for research use only.
-------------------	--

For research use only. For additional information, visit ProSci's [Terms and Conditions Page](#).