

DBX1 Antibody

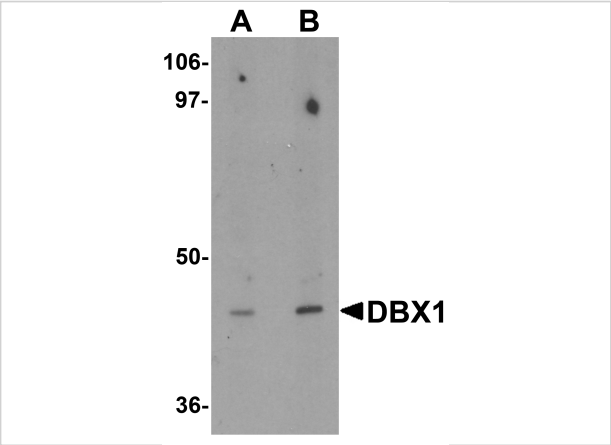
CATALOG NUMBER: 6455

Specifications

Host Species	Rabbit
Species Reactivity	Human, Mouse, Rat
Homology	Predicted species reactivity based on immunogen sequence: Bovine: (87%)
Immunogen	DBX1 antibody was raised against a 15 amino acid synthetic peptide near the center of human DBX1. The immunogen is located within amino acids 100 - 150 of DBX1.
Conjugate	Unconjugated
Tested Applications	ELISA, IF, IHC-P, WB
User Note	Optimal dilutions for each application to be determined by the researcher.
Specificity	DBX1 antibody is predicted to not cross-react with other DBX protein family members

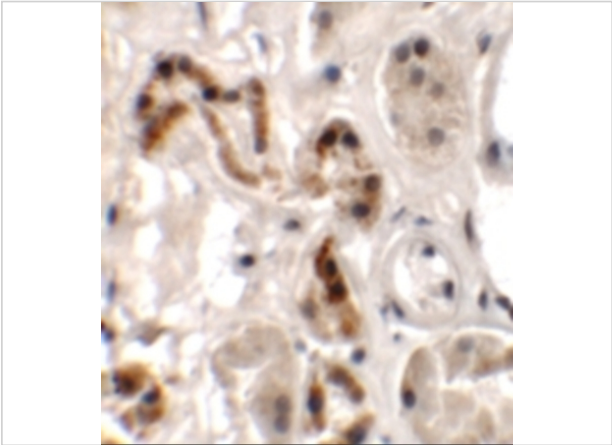
Properties

Purification	DBX1 Antibody is affinity chromatography purified via peptide column.
Clonality	Polyclonal
Isotype	IgG
Physical State	Liquid
Buffer	DBX1 Antibody is supplied in PBS containing 0.02% sodium azide.
Concentration	1 mg/mL
Storage Conditions	DBX1 antibody can be stored at 4°C for three months and -20°C, stable for up to one year. As with all antibodies care should be taken to avoid repeated freeze thaw cycles. Antibodies should not be exposed to prolonged high temperatures.



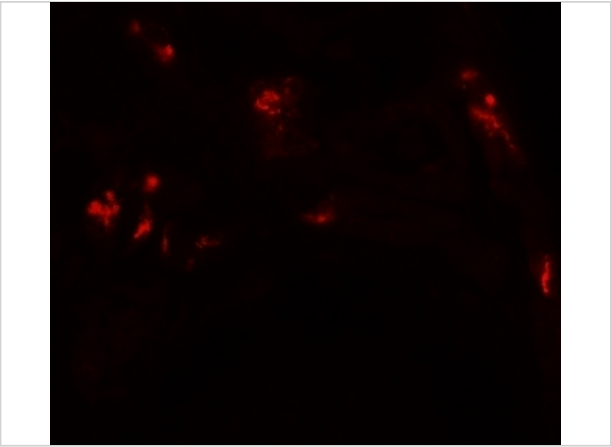
DBX1 Antibody 1

Western blot analysis of DBX1 in mouse kidney tissue lysate with DBX1 antibody at (A) 1 and (B) 2 µg/mL.



DBX1 Antibody 2

Immunohistochemistry of DBX1 in human kidney tissue with DBX1 antibody at 2.5 µg/mL.



DBX1 Antibody 3

Immunofluorescence of DBX1 in human kidney tissue with DBX1 antibody at 20 µg/mL.

Disclaimer

Disclaimer	Optimal dilutions/concentrations should be determined by the end user. The information provided is a guideline for product use. This product is for research use only.
------------	--

For research use only. For additional information, visit ProSci's [Terms and Conditions Page](#).