

CHD7 Antibody

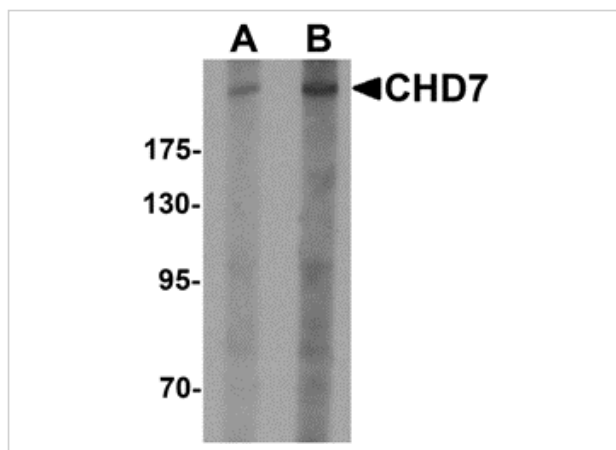
CATALOG NUMBER: 6441

Specifications

Host Species	Rabbit
Species Reactivity	Human, Mouse
Immunogen	CHD7 antibody was raised against an 18 amino acid synthetic peptide near the amino terminus of human CHD7. The immunogen is located within amino acids 670 - 720 of CHD7.
Conjugate	Unconjugated
Tested Applications	ELISA, IF, IHC-P, WB
User Note	Optimal dilutions for each application to be determined by the researcher.
Specificity	Multiple isoforms of CHD7 are known to exist.

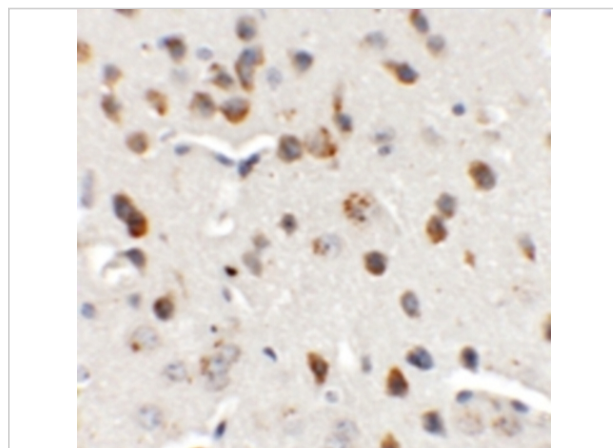
Properties

Purification	CHD7 Antibody is affinity chromatography purified via peptide column.
Clonality	Polyclonal
Isotype	IgG
Physical State	Liquid
Buffer	CHD7 Antibody is supplied in PBS containing 0.02% sodium azide.
Concentration	1 mg/mL
Storage Conditions	CHD7 antibody can be stored at 4°C for three months and -20°C, stable for up to one year. As with all antibodies care should be taken to avoid repeated freeze thaw cycles. Antibodies should not be exposed to prolonged high temperatures.



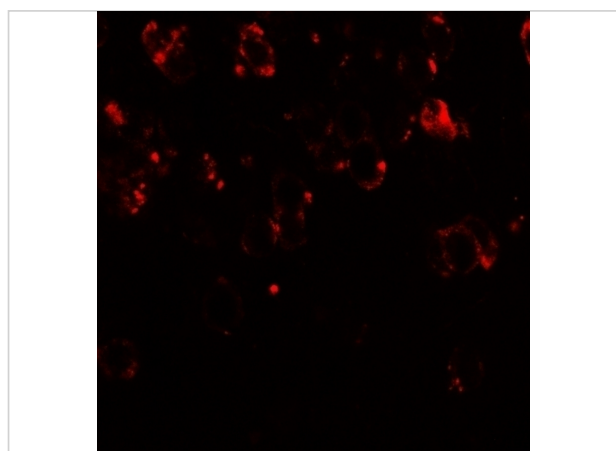
CHD7 Antibody 1

Western blot analysis of CHD7 in SK-N-SH cell lysate with CHD7 antibody at (A) 1 and (B) 2 $\mu\text{g/mL}$.



CHD7 Antibody 2

Immunohistochemistry of CHD7 in mouse brain tissue with CHD7 antibody at 5 $\mu\text{g/mL}$.



CHD7 Antibody 3

Immunofluorescence of CHD7 in mouse brain tissue with CHD7 antibody at 20 $\mu\text{g/mL}$.

Disclaimer

Disclaimer

Optimal dilutions/concentrations should be determined by the end user. The information provided is a guideline for product use. This product is for research use only.

For research use only. For additional information, visit ProSci's [Terms and Conditions Page](#).