

TMEM59L Antibody

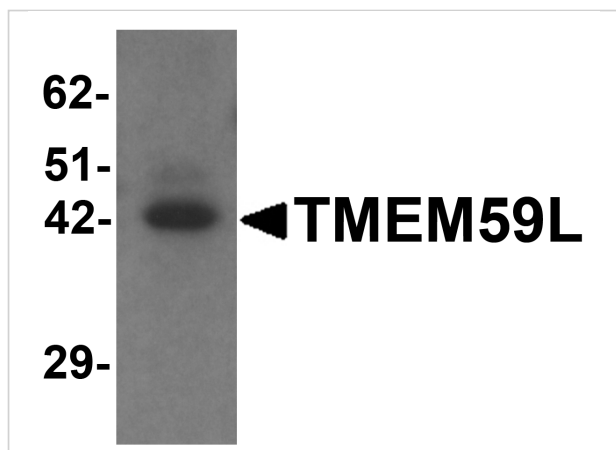
CATALOG NUMBER: 6435

Specifications

Host Species	Rabbit
Species Reactivity	Human, Mouse, Rat
Homology	Predicted species reactivity based on immunogen sequence: Bovine: (89%)
Immunogen	TMEM59L antibody was raised against a 19 amino acid synthetic peptide near carboxy terminus of human TMEM59L. The immunogen is located within amino acids 220 - 270 of TMEM59L.
Conjugate	Unconjugated
Tested Applications	ELISA, IF, IHC-P, WB
User Note	Optimal dilutions for each application to be determined by the researcher.
Specificity	Multiple isoforms of TMEM59L are known to exist. TMEM59L antibody is predicted to not cross-react TMEM59.

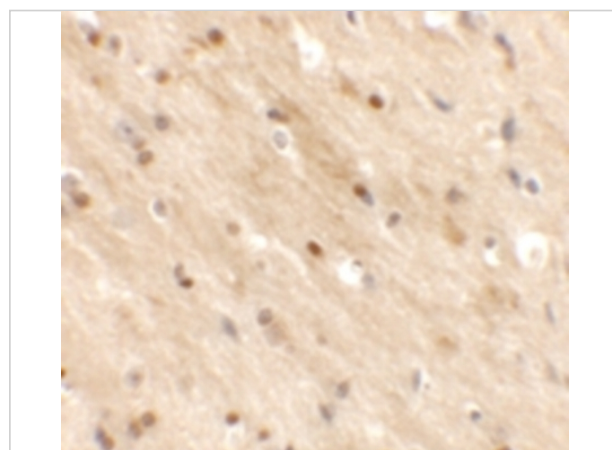
Properties

Purification	TMEM59L Antibody is affinity chromatography purified via peptide column.
Clonality	Polyclonal
Isotype	IgG
Physical State	Liquid
Buffer	TMEM59L Antibody is supplied in PBS containing 0.02% sodium azide.
Concentration	1 mg/mL
Storage Conditions	TMEM59L antibody can be stored at 4°C for three months and -20°C, stable for up to one year. As with all antibodies care should be taken to avoid repeated freeze thaw cycles. Antibodies should not be exposed to prolonged high temperatures.



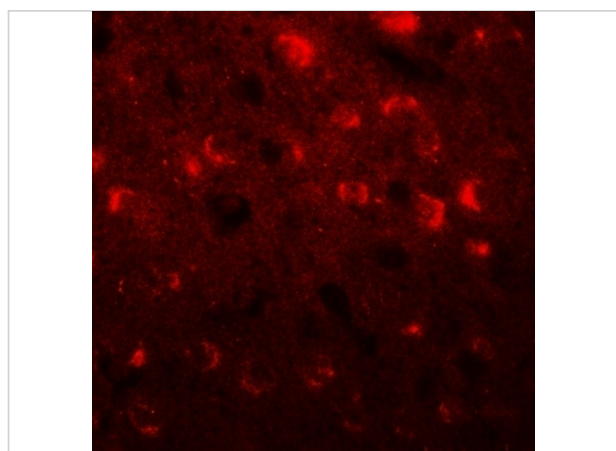
TMEM59L Antibody 1

Western blot analysis of TMEM59L in rat heart tissue lysate with TMEM59L antibody at 1 µg/mL.



TMEM59L Antibody 2

Immunohistochemistry of TMEM59L in mouse brain tissue with TMEM59L antibody at 2.5 µg/mL.



TMEM59L Antibody 3

Immunofluorescence of TMEM59L in mouse brain tissue with TMEM59L antibody at 20 µg/mL.

Disclaimer

Disclaimer

Optimal dilutions/concentrations should be determined by the end user. The information provided is a guideline for product use. This product is for research use only.

For research use only. For additional information, visit ProSci's [Terms and Conditions Page](#).