

## TMEM204 Antibody

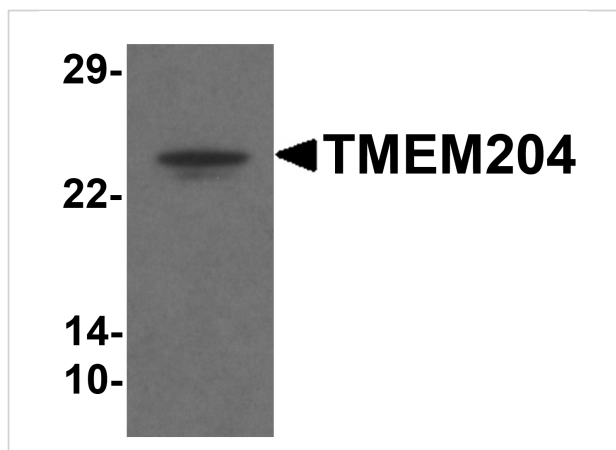
CATALOG NUMBER: 6415

### Specifications

Host Species	Rabbit
Species Reactivity	Human, Mouse, Rat
Homology	Predicted species reactivity based on immunogen sequence: Bovine: (100%)
Immunogen	TMEM204 antibody was raised against a 17 amino acid synthetic peptide near the carboxy terminus of human TMEM204. The immunogen is located within the last 50 amino acids of TMEM204.
Conjugate	Unconjugated
Tested Applications	ELISA, IF, IHC-P, WB
User Note	Optimal dilutions for each application to be determined by the researcher.
Specificity	At least two isoforms of TMEM204 are known to exist; this antibody will recognize both isoforms.

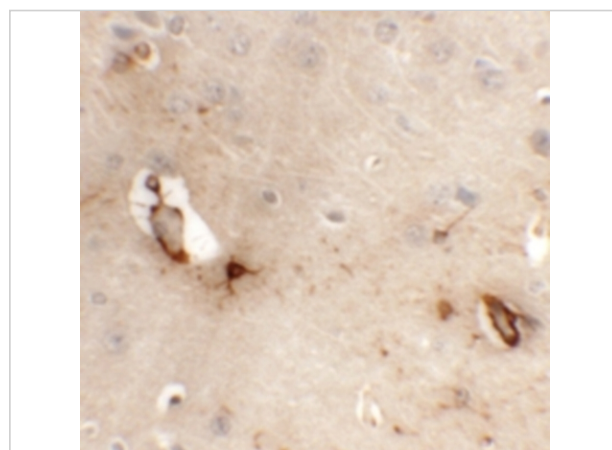
### Properties

Purification	TMEM204 Antibody is affinity chromatography purified via peptide column.
Clonality	Polyclonal
Isotype	IgG
Physical State	Liquid
Buffer	TMEM204 Antibody is supplied in PBS containing 0.02% sodium azide.
Concentration	1 mg/mL
Storage Conditions	TMEM204 antibody can be stored at 4°C for three months and -20°C, stable for up to one year. As with all antibodies care should be taken to avoid repeated freeze thaw cycles. Antibodies should not be exposed to prolonged high temperatures.



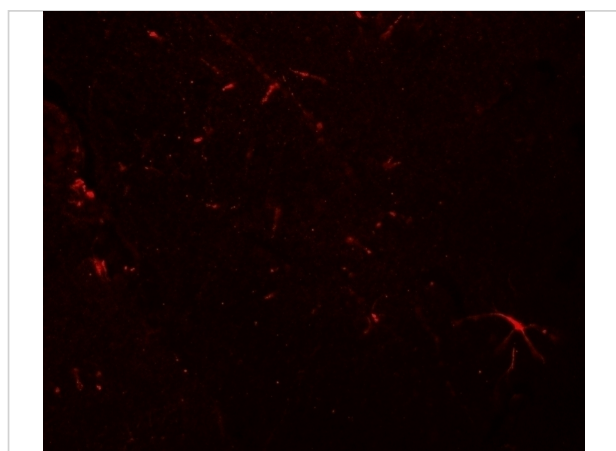
### TMEM204 Antibody 1

Western blot analysis of TMEM204 in human brain tissue lysate with TMEM204 antibody at 1 µg/mL.



### TMEM204 Antibody 2

Immunohistochemistry of TMEM204 in mouse brain tissue with TMEM204 antibody at 5 µg/mL.



### TMEM204 Antibody 3

Immunofluorescence of TMEM204 in mouse brain tissue with TMEM204 antibody at 20 µg/mL.

## Disclaimer

#### Disclaimer

Optimal dilutions/concentrations should be determined by the end user. The information provided is a guideline for product use. This product is for research use only.

For research use only. For additional information, visit ProSci's [Terms and Conditions Page](#).