

SYTL5 Antibody

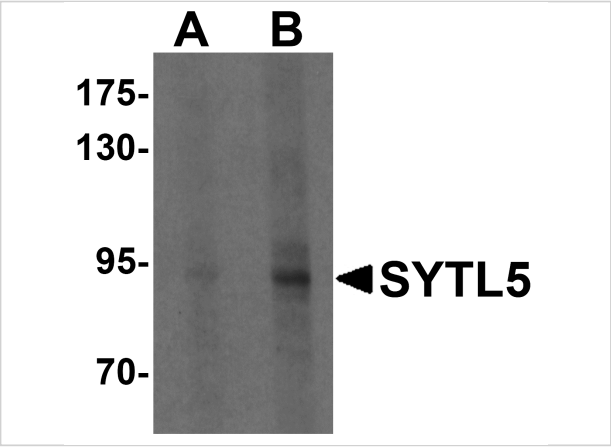
CATALOG NUMBER: 6413

Specifications

Host Species	Rabbit
Species Reactivity	Human, Mouse, Rat
Immunogen	SYTL5 antibody was raised against a 17 amino acid synthetic peptide near the amino terminus of human SYTL5. The immunogen is located within amino acids 30 - 80 of SYTL5.
Conjugate	Unconjugated
Tested Applications	ELISA, IHC-P, WB
User Note	Optimal dilutions for each application to be determined by the researcher.
Specificity	Multiple isoforms of SYTL5 are known to exist. SYTL5 antibody is predicted to not cross-react with other SYTL protein family members.

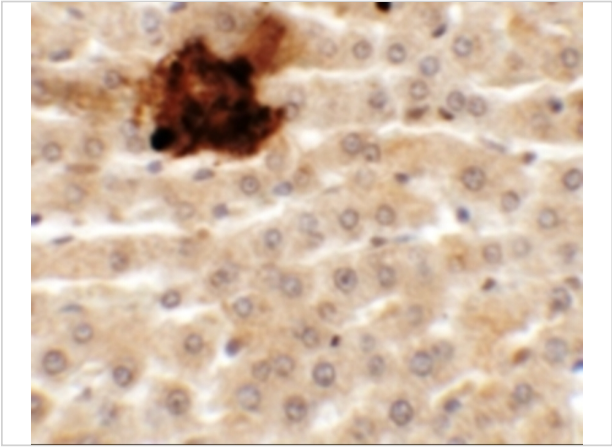
Properties

Purification	SYTL5 Antibody is affinity chromatography purified via peptide column.
Clonality	Polyclonal
Isotype	IgG
Physical State	Liquid
Buffer	SYTL5 Antibody is supplied in PBS containing 0.02% sodium azide.
Concentration	1 mg/mL
Storage Conditions	SYTL5 antibody can be stored at 4°C for three months and -20°C, stable for up to one year. As with all antibodies care should be taken to avoid repeated freeze thaw cycles. Antibodies should not be exposed to prolonged high temperatures.



SYTL5 Antibody 1

Western blot analysis of SYTL5 in Hela cell lysate with SYTL5 antibody at (A) 1 and (B) 2 $\mu\text{g/mL}$.



SYTL5 Antibody 2

Immunohistochemistry of SYTL2 in rat liver tissue with SYTL2 antibody at 5 $\mu\text{g/mL}$.

Disclaimer

Disclaimer	Optimal dilutions/concentrations should be determined by the end user. The information provided is a guideline for product use. This product is for research use only.
------------	------------------------------------------------------------------------------------------------------------------------------------------------------------------------

For research use only. For additional information, visit ProSci's [Terms and Conditions Page](#).