

APG7 Antibody

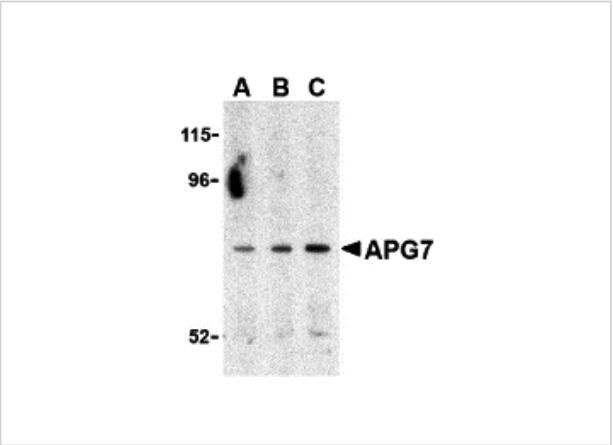
CATALOG NUMBER: 3615

Specifications

Host Species	Rabbit
Species Reactivity	Human, Mouse
Homology	Predicted species reactivity based on immunogen sequence: Chicken: (100%), Rat: (100%)
Immunogen	APG7 antibody was raised against a 17 amino acid synthetic peptide from near the carboxy terminus of human APG7. The immunogen is located within amino acids 590 - 640 of APG7.
Conjugate	Unconjugated
Tested Applications	ELISA, ICC, IF, WB
User Note	Optimal dilutions for each application to be determined by the researcher.
Specificity	At least three isoforms of APG7 are known to exist; this antibody will detect all three isoforms. APG7 antibody is predicted not to cross-react with other ATG family proteins.
Predicted Molecular Weight	Predicted: 69, 74, 77 kDa Observed: 77 kDa

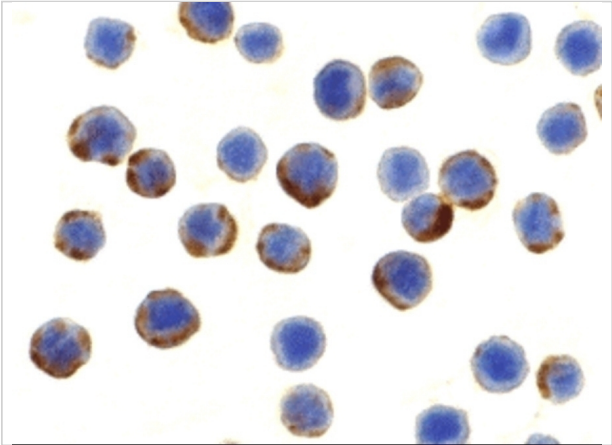
Properties

Purification	APG7 Antibody is affinity chromatography purified via peptide column.
Clonality	Polyclonal
Isotype	IgG
Physical State	Liquid
Buffer	APG7 Antibody is supplied in PBS containing 0.02% sodium azide.
Concentration	1 mg/mL
Storage Conditions	APG7 antibody can be stored at 4°C for three months and -20°C, stable for up to one year. As with all antibodies care should be taken to avoid repeated freeze thaw cycles. Antibodies should not be exposed to prolonged high temperatures.



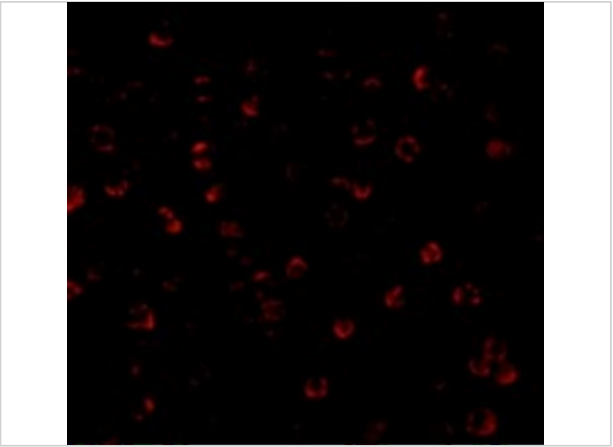
APG7 Antibody 1

Western blot analysis of APG7 in Caco-2 cell lysate with APG7 antibody at (A) 0.5, (B) 1 and (C) 2 µg/mL.



APG7 Antibody 2

Immunocytochemistry of APG7 in MCF7 cells with APG7 antibody at 10 µg/mL.



APG7 Antibody 3

Immunofluorescence of APG7 in MCF7 cells with APG7 antibody at 20 µg/mL.

Disclaimer

Disclaimer	Optimal dilutions/concentrations should be determined by the end user. The information provided is a guideline for product use. This product is for research use only.
------------	--

For research use only. For additional information, visit ProSci's [Terms and Conditions Page](#).