

Beclin-1 Antibody

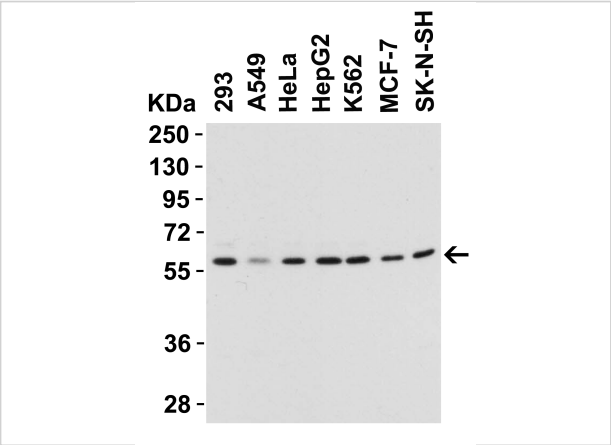
CATALOG NUMBER: 3613

Specifications

Host Species	Rabbit
Species Reactivity	Human, Mouse, Rat
Homology	Predicted species reactivity based on immunogen sequence: Bovine: (94%), Pig: (88%)
Immunogen	Anti-Beclin-1 antibody (3613) was raised against a peptide corresponding to 17 amino acids near the center of human Beclin-1. The immunogen is located between 40-90 amino acids of Beclin-1.
Conjugate	Unconjugated
Tested Applications	ELISA, IF, IHC-P, WB
User Note	Optimal dilutions for each application to be determined by the researcher.
Predicted Molecular Weight	Predicted: 52 kD Observed: 60 kD

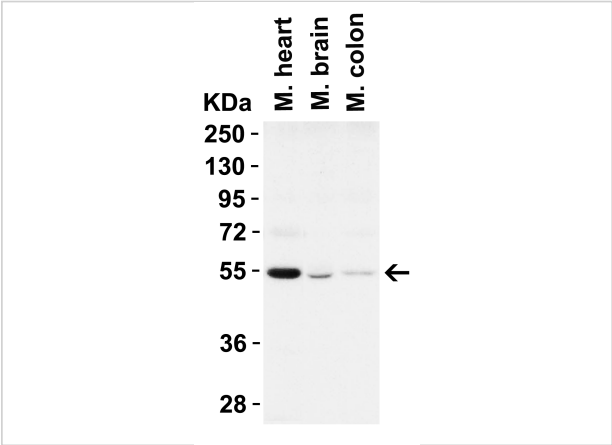
Properties

Purification	Beclin-1 Antibody is affinity chromatography purified via peptide column.
Clonality	Polyclonal
Isotype	IgG
Physical State	Liquid
Buffer	Beclin-1 Antibody is supplied in PBS containing 0.02% sodium azide.
Concentration	1 mg/mL
Storage Conditions	Beclin-1 antibody can be stored at 4°C up to one year. Antibodies should not be exposed to prolonged high temperatures.



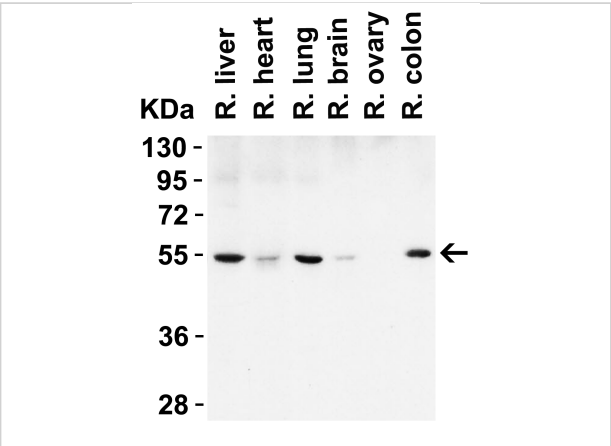
Beclin-1 Antibody 1

Figure 1 WB Validation in Human Cell Lines
Loading: 15 µg of lysate Antibodies: Beclin-1 3613 , 1 µg/mL , 1 h incubation at RT in 5% NFDM/TBST. Secondary: Goat Anti-Rabbit Ig...



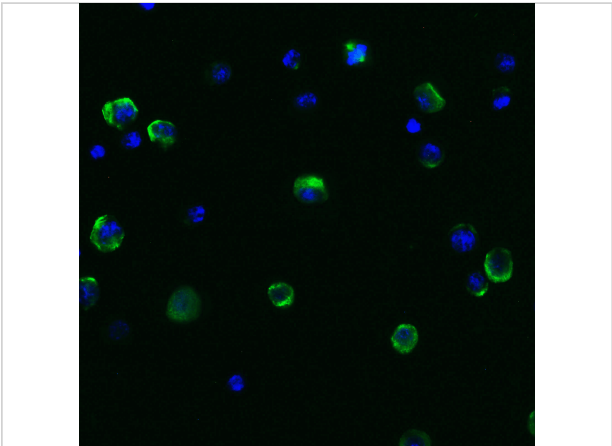
Beclin-1 Antibody 2

Figure 2 WB Validation in Mouse Cell Lines
Loading: 15 µg of lysate Antibodies: Beclin-1 3613 , 1 µg/mL , 1 h incubation at RT in 5% NFDM/TBST. Secondary: Goat Anti-Rabbit Ig...



Beclin-1 Antibody 3

Figure 3 WB Validation in Rat Cell Lines
Loading: 15 µg of lysate Antibodies: Beclin-1 3613 , 1 µg/mL , 1 h incubation at RT in 5% NFDM/TBST. Secondary: Goat Anti-Rabbit IgG ...



Beclin-1 Antibody 4

Figure 4 Immunofluorescence Validation of Beclin-1 in HELA Cells
Immunofluorescent analysis of 4% paraformaldehyde-fixed Hela cells labeling Beclin-1 with 3613 at 10 µg/mL, foll...

Disclaimer

Disclaimer	Optimal dilutions/concentrations should be determined by the end user. The information provided is a guideline for product use. This product is for research use only.
------------	--

For research use only. For additional information, visit ProSci's [Terms and Conditions Page](#).