

TYW4 Antibody

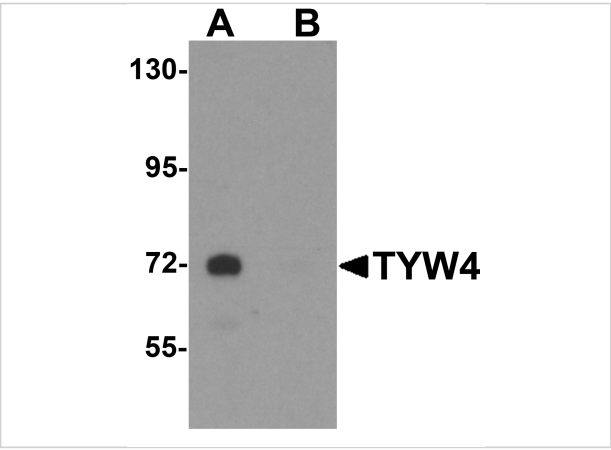
CATALOG NUMBER: 6379

Specifications

Host Species	Rabbit
Species Reactivity	Human, Mouse, Rat
Immunogen	TYW4 antibody was raised against a 16 amino acid synthetic peptide near the amino terminus of human TYW4. The immunogen is located within the first 50 amino acids of TYW4.
Conjugate	Unconjugated
Tested Applications	ELISA, IF, IHC-P, WB
User Note	Optimal dilutions for each application to be determined by the researcher.
Specificity	TYW4 antibody is predicted to not cross-react with other TYW protein family members. At least two isoforms of TYW4 are known to exist; this antibody will detect only the long isoform.

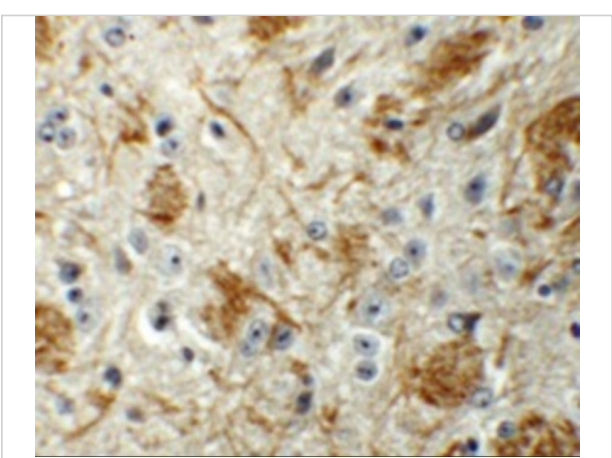
Properties

Purification	TYW4 Antibody is affinity chromatography purified via peptide column.
Clonality	Polyclonal
Isotype	IgG
Physical State	Liquid
Buffer	TYW4 Antibody is supplied in PBS containing 0.02% sodium azide.
Concentration	1 mg/mL
Storage Conditions	TYW4 antibody can be stored at 4°C for three months and -20°C, stable for up to one year. As with all antibodies care should be taken to avoid repeated freeze thaw cycles. Antibodies should not be exposed to prolonged high temperatures.



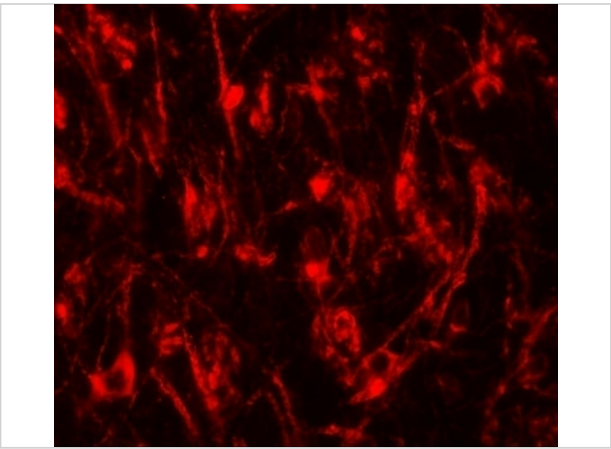
TYW4 Antibody 1

Western blot analysis of TYW4 in rat brain tissue lysate with TYW4 antibody at 1 µg/mL in (A) the absence and (B) the presence of blocking peptide.



TYW4 Antibody 2

Immunohistochemistry of TYW4 in mouse brain tissue with TYW4 antibody at 5 µg/mL.



TYW4 Antibody 3

Immunofluorescence of TYW1 in mouse brain tissue with TYW1 antibody at 20 µg/mL.

Disclaimer

Disclaimer	Optimal dilutions/concentrations should be determined by the end user. The information provided is a guideline for product use. This product is for research use only.
-------------------	--

For research use only. For additional information, visit ProSci's [Terms and Conditions Page](#).