

TYW3 Antibody

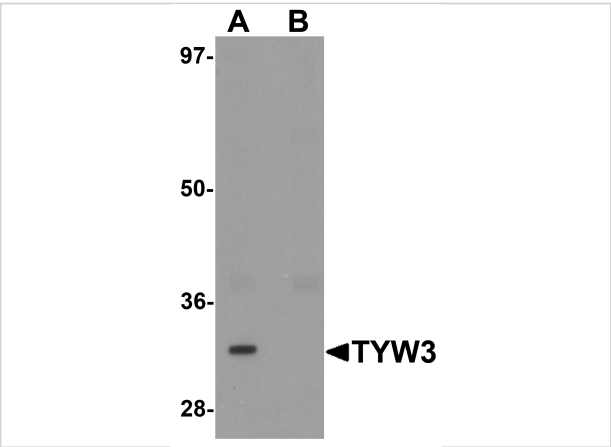
CATALOG NUMBER: 6377

Specifications

Host Species	Rabbit
Species Reactivity	Human, Mouse
Homology	Predicted species reactivity based on immunogen sequence: Bovine: (94%), Pig: (94%)
Immunogen	TYW3 antibody was raised against a 17 amino acid synthetic peptide near the center of human TYW3. The immunogen is located within amino acids 160 - 210 of TYW3.
Conjugate	Unconjugated
Tested Applications	ELISA, WB
User Note	Optimal dilutions for each application to be determined by the researcher.
Specificity	TYW3 antibody is predicted to not cross-react with other TYW protein family members. At least two isoforms of TYW3 are known to exist; this antibody will detect both isoforms.

Properties

Purification	TYW3 Antibody is affinity chromatography purified via peptide column.
Clonality	Polyclonal
Isotype	IgG
Physical State	Liquid
Buffer	TYW3 Antibody is supplied in PBS containing 0.02% sodium azide.
Concentration	1 mg/mL
Storage Conditions	TYW3 antibody can be stored at 4 °C, stable for one year. As with all antibodies care should be taken to avoid repeated freeze thaw cycles. Antibodies should not be exposed to prolonged high temperatures.



TYW3 Antibody 1

Western blot analysis of TYW3 in A549 cell lysate with TYW3 antibody at 1 µg/mL in (A) the absence and (B) the presence of blocking peptide.

Disclaimer

Disclaimer	Optimal dilutions/concentrations should be determined by the end user. The information provided is a guideline for product use. This product is for research use only.
------------	--

For research use only. For additional information, visit ProSci's [Terms and Conditions Page](#).