

AES Antibody

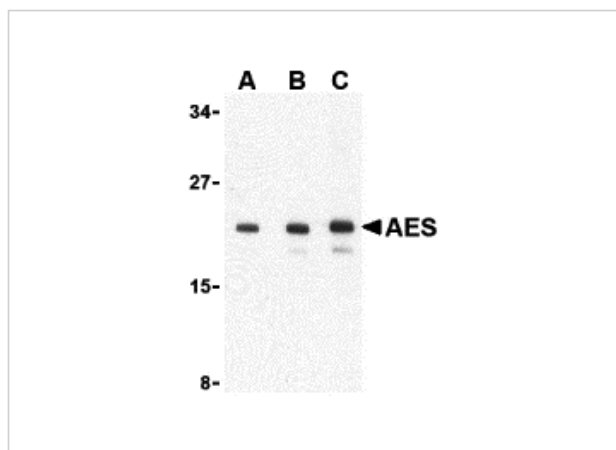
CATALOG NUMBER: 3607

Specifications

Host Species	Rabbit
Species Reactivity	Human, Mouse, Rat
Immunogen	AES antibody was raised against a 16 amino acid synthetic peptide from near the carboxy terminus of human AES. The immunogen is located within the last 50 amino acids of AES.
Conjugate	Unconjugated
Tested Applications	ELISA, ICC, IF, WB
User Note	Optimal dilutions for each application to be determined by the researcher.

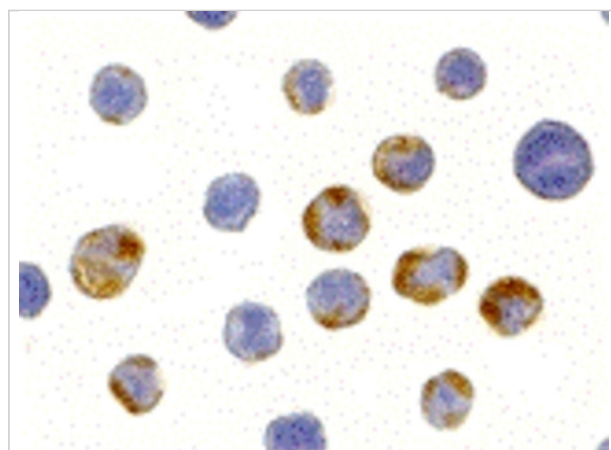
Properties

Purification	AES Antibody is affinity chromatography purified via peptide column.
Clonality	Polyclonal
Isotype	IgG
Physical State	Liquid
Buffer	AES Antibody is supplied in PBS containing 0.02% sodium azide.
Concentration	1 mg/mL
Storage Conditions	AES antibody can be stored at 4°C for three months and -20°C, stable for up to one year. As with all antibodies care should be taken to avoid repeated freeze thaw cycles. Antibodies should not be exposed to prolonged high temperatures.



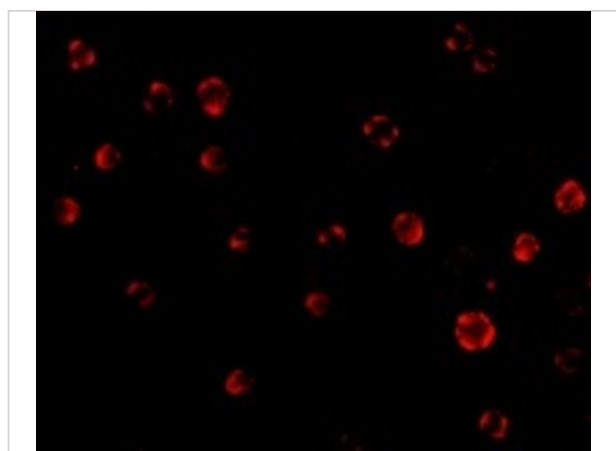
AES Antibody 1

Western blot analysis of AES in 293 cell lysate with AES antibody at (A) 1, (B) 2 and (C) 4 $\mu\text{g/mL}$.



AES Antibody 2

Immunocytochemistry of AES in HeLa cells with AES antibody at 10 $\mu\text{g/mL}$.



AES Antibody 3

Immunofluorescence of AES in HeLa cells with AES antibody at 20 $\mu\text{g/mL}$.

Disclaimer

Disclaimer

Optimal dilutions/concentrations should be determined by the end user. The information provided is a guideline for product use. This product is for research use only.

For research use only. For additional information, visit ProSci's [Terms and Conditions Page](#).