

ORMDL1 Antibody

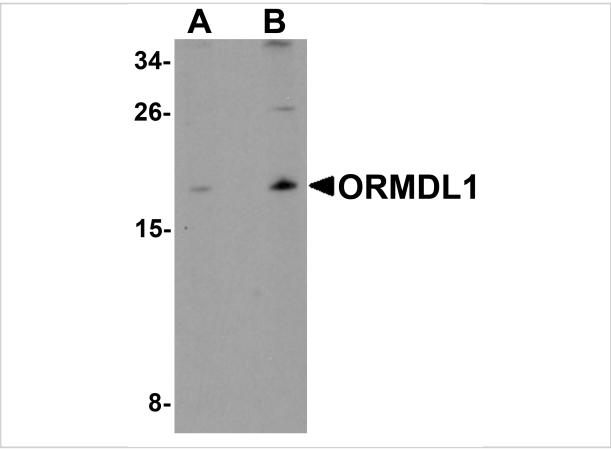
CATALOG NUMBER: 6313

Specifications

Host Species	Rabbit
Species Reactivity	Human, Mouse, Rat
Homology	Predicted species reactivity based on immunogen sequence: Bovine: (100%), Chicken: (94%)
Immunogen	ORMDL1 antibody was raised against a 16 amino acid synthetic peptide of human ORMDL1. The immunogen is located within amino acids 50 - 100 of ORMDL1.
Conjugate	Unconjugated
Tested Applications	ELISA, IF, IHC-P, WB
User Note	Optimal dilutions for each application to be determined by the researcher.
Specificity	ORMDL1 antibody may cross-react with other ORMDL protein family members.

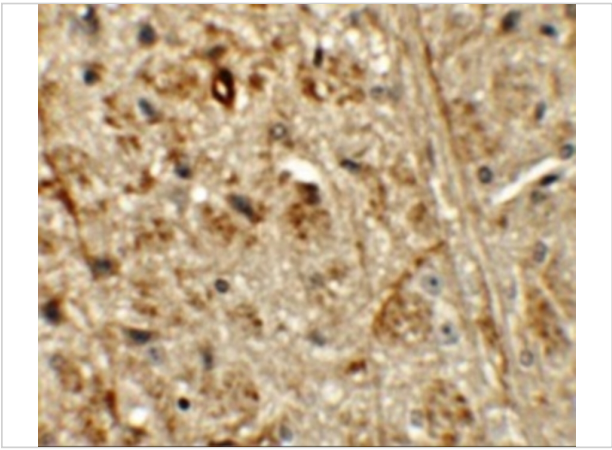
Properties

Purification	ORMDL1 Antibody is affinity chromatography purified via peptide column.
Clonality	Polyclonal
Isotype	IgG
Physical State	Liquid
Buffer	ORMDL1 Antibody is supplied in PBS containing 0.02% sodium azide.
Concentration	1 mg/mL
Storage Conditions	ORMDL1 antibody can be stored at 4 °C, stable for one year. As with all antibodies care should be taken to avoid repeated freeze thaw cycles. Antibodies should not be exposed to prolonged high temperatures.



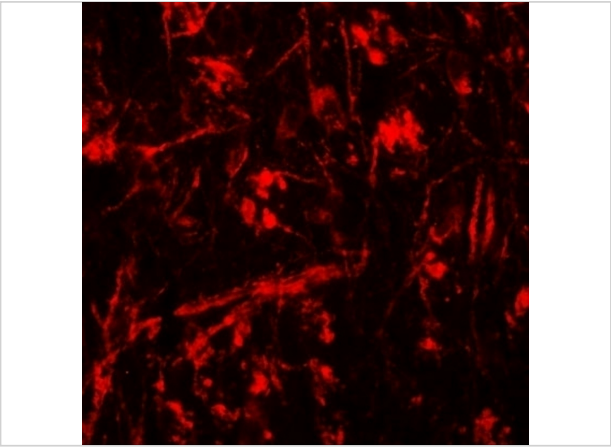
ORMDL1 Antibody 1

Western blot analysis of ORMDL1 in SK-N-SH Cell lysate with ORMDL1 antibody at (A) 1 µg/mL and (B) 2 µg/mL.



ORMDL1 Antibody 2

Immunohistochemistry of ORMDL1 in mouse brain tissue with ORMDL1 antibody at 5 µg/mL.



ORMDL1 Antibody 3

Immunofluorescence of ORMDL1 in mouse brain tissue with ORMDL1 antibody at 20 µg/mL.

Disclaimer

Disclaimer	Optimal dilutions/concentrations should be determined by the end user. The information provided is a guideline for product use. This product is for research use only.
------------	--

For research use only. For additional information, visit ProSci's [Terms and Conditions Page](#).