

MSI2 Antibody

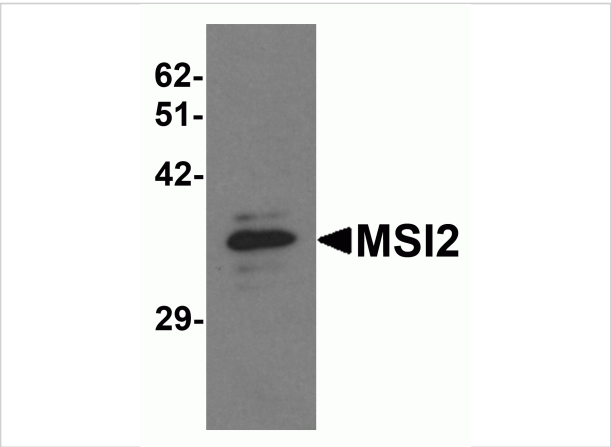
CATALOG NUMBER: 6309

Specifications

Host Species	Rabbit
Species Reactivity	Human, Mouse, Rat
Immunogen	MSI2 antibody was raised against a 15 amino acid synthetic peptide near the amino terminus of human MSI2. The immunogen is located within amino acids 30 - 80 of MSI2.
Conjugate	Unconjugated
Tested Applications	ELISA, ICC, IF, IHC-P, WB
User Note	Optimal dilutions for each application to be determined by the researcher.
Specificity	MSI2 antibody is predicted to not cross-react with MSI1. Multiple isoforms of MSI2 are known to exist.

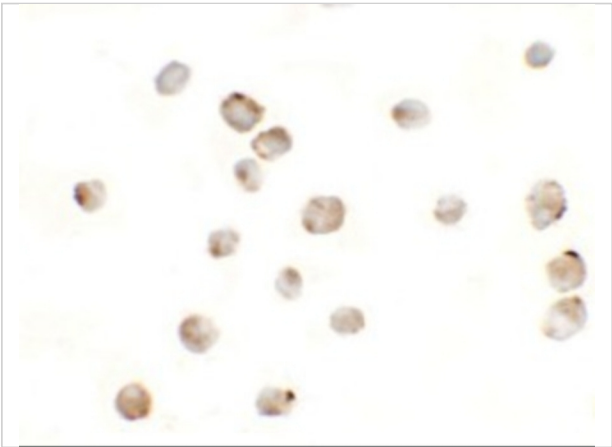
Properties

Purification	MSI2 Antibody is affinity chromatography purified via peptide column.
Clonality	Polyclonal
Isotype	IgG
Physical State	Liquid
Buffer	MSI2 Antibody is supplied in PBS containing 0.02% sodium azide.
Concentration	1 mg/mL
Storage Conditions	MSI2 antibody can be stored at 4 °C, stable for one year. As with all antibodies care should be taken to avoid repeated freeze thaw cycles. Antibodies should not be exposed to prolonged high temperatures.



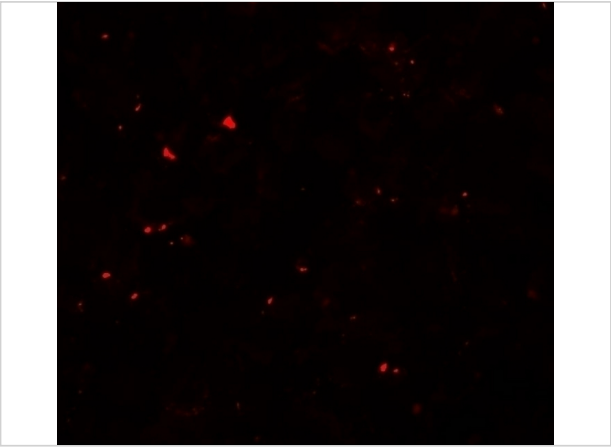
MSI2 Antibody 1

Western blot analysis of MSI2 in EL4 cell lysate with MSI2 antibody at 1 µg/mL.



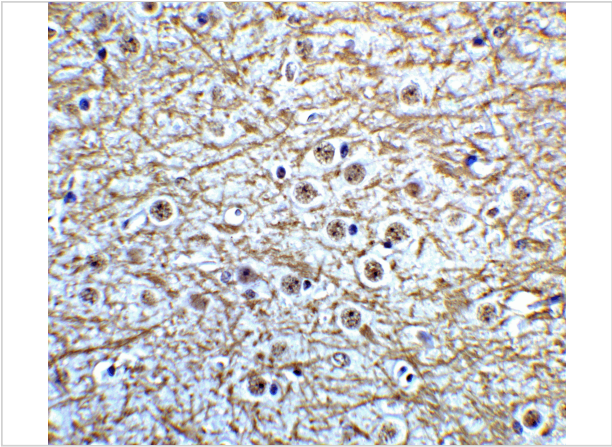
MSI2 Antibody 2

Immunocytochemistry of MSI2 in EL4 cells with MSI2 antibody at 5 µg/mL.



MSI2 Antibody 3

Immunofluorescence of MSI2 in EL4 cells with MSI2 antibody at 20 µg/mL.



MSI2 Antibody 4

Immunohistochemistry of MSI2 in mouse brain tissue with MSI2 Antibody at 5 µg/mL.

Disclaimer

Disclaimer	Optimal dilutions/concentrations should be determined by the end user. The information provided is a guideline for product use. This product is for research use only.
------------	--

For research use only. For additional information, visit ProSci's [Terms and Conditions Page](#).