

ROCK2 Antibody

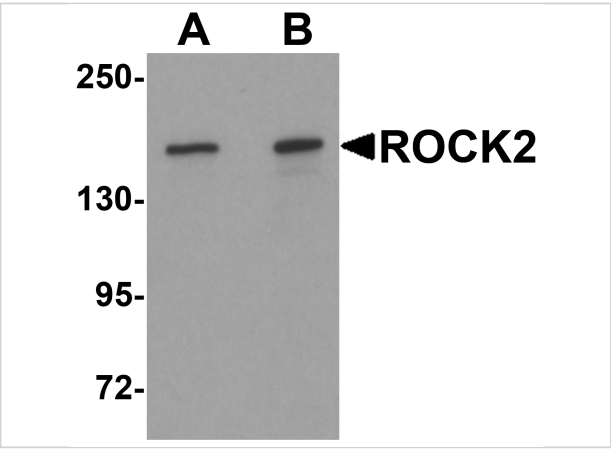
CATALOG NUMBER: 6297

Specifications

Host Species	Rabbit
Species Reactivity	Human, Mouse, Rat
Homology	Predicted species reactivity based on immunogen sequence: Bovine: (100%), Pig: (100%)
Immunogen	ROCK2 antibody was raised against a 15 amino acid synthetic peptide near the center of human ROCK2. The immunogen is located within amino acids 920 - 970 of ROCK2.
Conjugate	Unconjugated
Tested Applications	ELISA, IF, IHC-P, WB
User Note	Optimal dilutions for each application to be determined by the researcher.
Specificity	Three isoforms of ROCK2 are known to exist; this antibody recognizes all three isoforms. ROCK2 antibody is predicted to not cross-react with other ROCK protein family members.
Predicted Molecular Weight	Predicted: 153 kDa Observed: 160 kDa

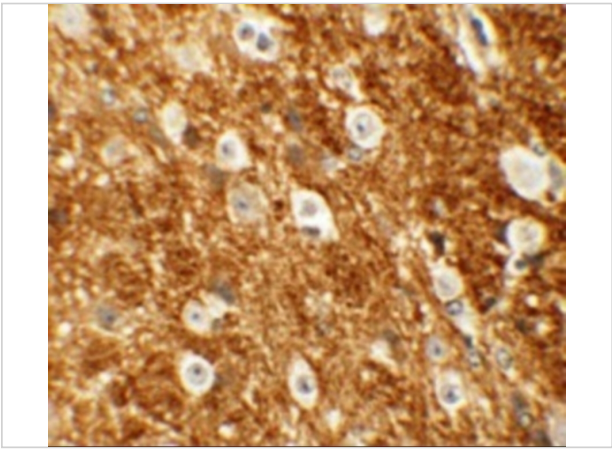
Properties

Purification	ROCK2 Antibody is affinity chromatography purified via peptide column.
Clonality	Polyclonal
Isotype	IgG
Physical State	Liquid
Buffer	ROCK2 Antibody is supplied in PBS containing 0.02% sodium azide.
Concentration	1 mg/mL
Storage Conditions	ROCK2 antibody can be stored at 4°C for three months and -20°C, stable for up to one year. As with all antibodies care should be taken to avoid repeated freeze thaw cycles. Antibodies should not be exposed to prolonged high temperatures.



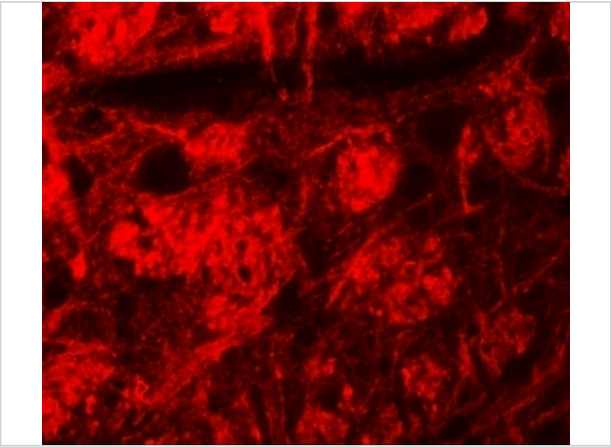
ROCK2 Antibody 1

Western blot analysis of ROCK2 in mouse brain tissue lysate with ROCK2 antibody at (A) 1 and (B) 2 µg/mL



ROCK2 Antibody 2

Immunohistochemistry of ROCK2 in mouse brain tissue with ROCK2 antibody at 5 µg/mL.



ROCK2 Antibody 3

Immunofluorescence of ROCK2 in mouse brain tissue with ROCK2 antibody at 20 µg/mL.

Disclaimer

Disclaimer	Optimal dilutions/concentrations should be determined by the end user. The information provided is a guideline for product use. This product is for research use only.
------------	--

For research use only. For additional information, visit ProSci's [Terms and Conditions Page](#).