

## DYRK1A Antibody

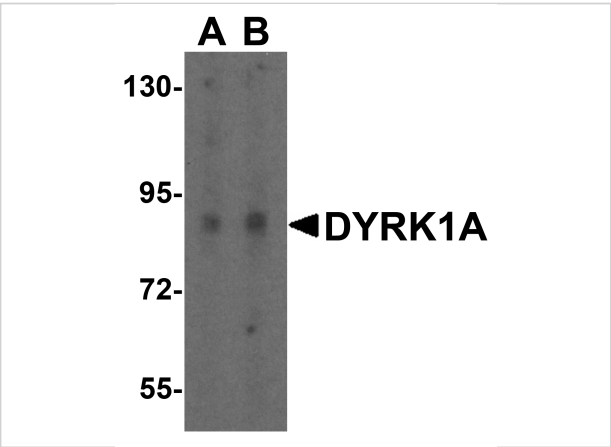
CATALOG NUMBER: 6255

### Specifications

Host Species	Rabbit
Species Reactivity	Human, Mouse, Rat
Immunogen	DYRK1A antibody was raised against a 17 amino acid synthetic peptide near the carboxy terminus of human DYRK1A. The immunogen is located within the last 50 amino acids of DYRK1A.
Conjugate	Unconjugated
Tested Applications	ELISA, ICC, WB
User Note	Optimal dilutions for each application to be determined by the researcher.
Specificity	Multiple isoforms of DYRK1A are known to exist. DYRK1A antibody will not cross-react with other DYRK family members
Predicted Molecular Weight	Predicted: 84 kDa Observed: 90 kDa

### Properties

Purification	DYRK1A Antibody is affinity chromatography purified via peptide column.
Clonality	Polyclonal
Isotype	IgG
Physical State	Liquid
Buffer	DYRK1A Antibody is supplied in PBS containing 0.02% sodium azide.
Concentration	1 mg/mL
Storage Conditions	DYRK1A antibody can be stored at 4°C for three months and -20°C, stable for up to one year. As with all antibodies care should be taken to avoid repeated freeze thaw cycles. Antibodies should not be exposed to prolonged high temperatures.



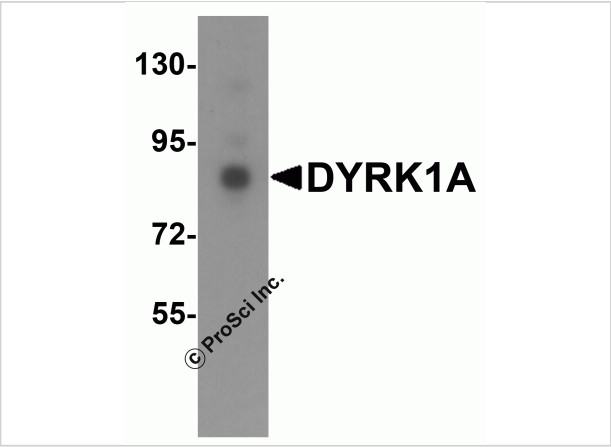
DYRK1A Antibody 1

Western blot analysis of DYRK1A in HeLa cell lysate with DYRK1A antibody at (A) 1 and (B) 2 µg/mL.



DYRK1A Antibody 2

Immunocytochemistry of DYRK1A in HeLa cells with DYRK1A antibody at 10 µg/mL.



DYRK1A Antibody 3

DYRK1A Antibody

Disclaimer

Disclaimer	Optimal dilutions/concentrations should be determined by the end user. The information provided is a guideline for product use. This product is for research use only.
------------	--

For research use only. For additional information, visit ProSci's [Terms and Conditions Page](#).