

TMEM192 Antibody

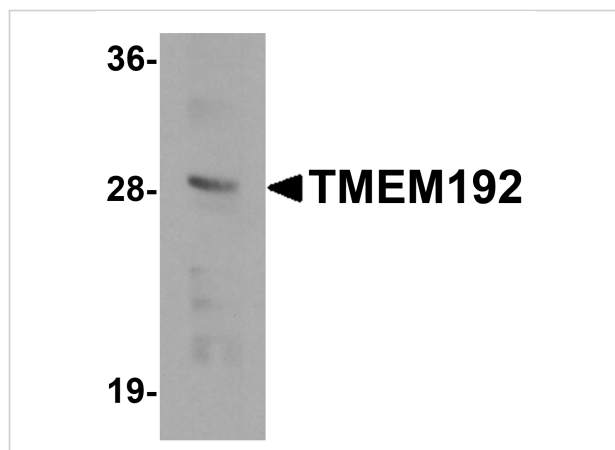
CATALOG NUMBER: 6227

Specifications

Host Species	Rabbit
Species Reactivity	Human, Mouse, Rat
Immunogen	TMEM192 antibody was raised against a 17 amino acid synthetic peptide near the carboxy terminus of human TMEM192. The immunogen is located within amino acids 180 - 230 of TMEM192.
Conjugate	Unconjugated
Tested Applications	ELISA, IF, IHC-P, WB
User Note	Optimal dilutions for each application to be determined by the researcher.
Specificity	At least two isoforms of TMEM192 are known to exist; this antibody will recognize both. TMEM192 antibody is predicted to not cross-react with other TMEM proteins.

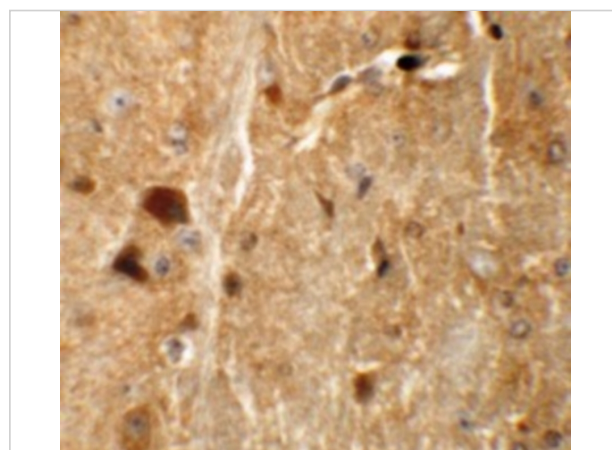
Properties

Purification	TMEM192 Antibody is affinity chromatography purified via peptide column.
Clonality	Polyclonal
Isotype	IgG
Physical State	Liquid
Buffer	TMEM192 Antibody is supplied in PBS containing 0.02% sodium azide.
Concentration	1 mg/mL
Storage Conditions	TMEM192 antibody can be stored at 4°C for three months and -20°C, stable for up to one year. As with all antibodies care should be taken to avoid repeated freeze thaw cycles. Antibodies should not be exposed to prolonged high temperatures.



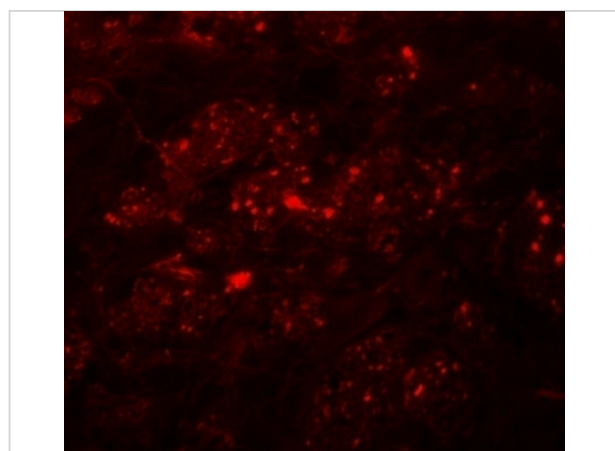
TMEM192 Antibody 1

Western blot analysis of TMEM192 in SK-N-SH cell lysate with TMEM192 antibody at 0.5 µg/mL.



TMEM192 Antibody 2

Immunohistochemistry of TMEM192 in mouse brain tissue with TMEM192 antibody at 5 µg/mL.



TMEM192 Antibody 3

Immunofluorescence of TMEM192 in mouse brain tissue with TMEM192 antibody at 20 µg/mL.

Disclaimer

Disclaimer

Optimal dilutions/concentrations should be determined by the end user. The information provided is a guideline for product use. This product is for research use only.

For research use only. For additional information, visit ProSci's [Terms and Conditions Page](#).