

## GLS2 Antibody

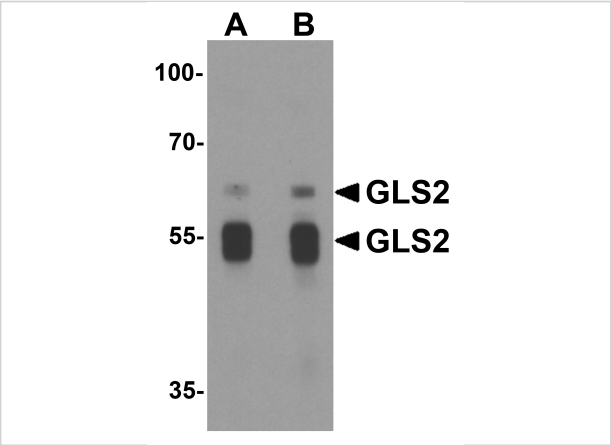
CATALOG NUMBER: 6217

### Specifications

Host Species	Rabbit
Species Reactivity	Human, Mouse, Rat
Immunogen	GLS2 antibody was raised against an 18 amino acid synthetic peptide near the center terminus of human GLS2. The immunogen is located within amino acids 300 - 350 of GLS2.
Conjugate	Unconjugated
Tested Applications	ELISA, IF, IHC-P, WB
User Note	Optimal dilutions for each application to be determined by the researcher.
Specificity	Multiple isoforms of GLS2 are known to exist.
Predicted Molecular Weight	Predicted: 36, 55, 62, 66 kDa Observed: 55, 62 kDa

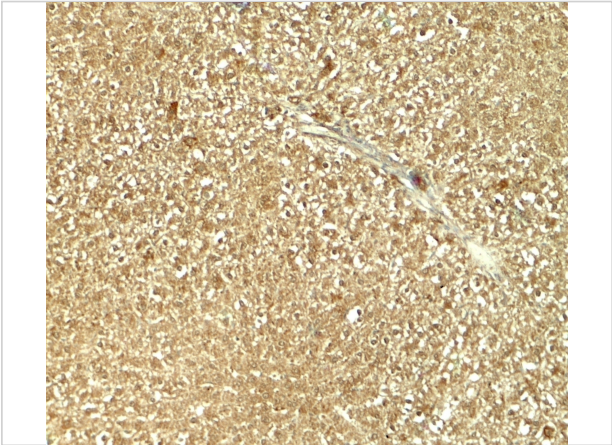
### Properties

Purification	GLS2 Antibody is affinity chromatography purified via peptide column.
Clonality	Polyclonal
Isotype	IgG
Physical State	Liquid
Buffer	GLS2 Antibody is supplied in PBS containing 0.02% sodium azide.
Concentration	1 mg/mL
Storage Conditions	GLS2 antibody can be stored at 4°C up to one year. Antibodies should not be exposed to prolonged high temperatures.



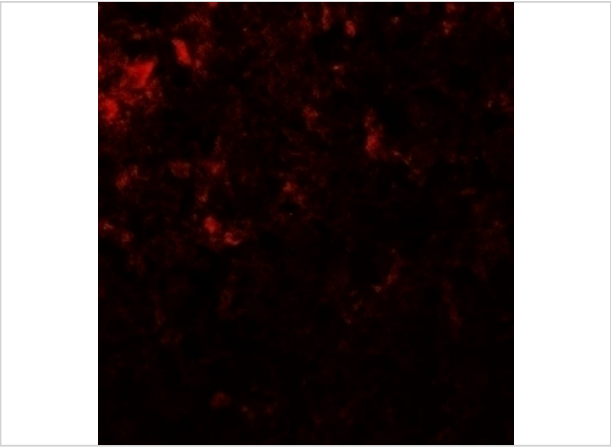
GLS2 Antibody 1

Western blot analysis of GLS2 in rat liver tissue lysate with GLS2 antibody at (A) 1 and (B) 2  $\mu\text{g/mL}$ .



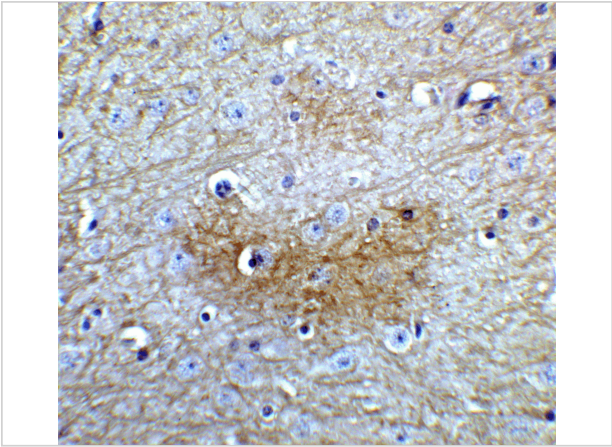
GLS2 Antibody 2

Immunohistochemistry of GLS2 in rat liver tissue with GLS2 antibody at 5  $\mu\text{g/mL}$ .



GLS2 Antibody 3

Immunofluorescence of GLS2 in rat liver cells with GLS2 antibody at 20 5  $\mu\text{g/mL}$ .



GLS2 Antibody 4

Immunohistochemistry of GLS2 in mouse brain tissue with GLS2 Antibody at 5  $\mu\text{g/mL}$ .

Disclaimer

Disclaimer	Optimal dilutions/concentrations should be determined by the end user. The information provided is a guideline for product use. This product is for research use only.
------------	--

For research use only. For additional information, visit ProSci's [Terms and Conditions Page](#).