

BAPX1 Antibody

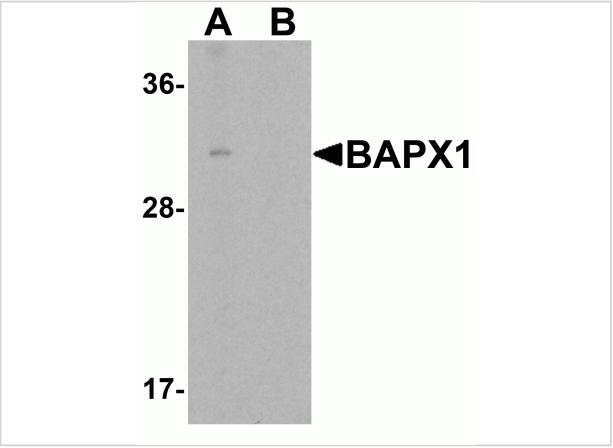
CATALOG NUMBER: 6211

Specifications

Host Species	Rabbit
Species Reactivity	Human, Mouse, Rat
Immunogen	BAPX1 antibody was raised against a 19 amino acid synthetic peptide near the center of human BAPX1. The immunogen is located within amino acids 180 - 230 of BAPX1.
Conjugate	Unconjugated
Tested Applications	ELISA, IF, IHC-P, WB
User Note	Optimal dilutions for each application to be determined by the researcher.
Specificity	BAPX1 antibody is predicted not to cross-react with other NKX homeobox proteins.

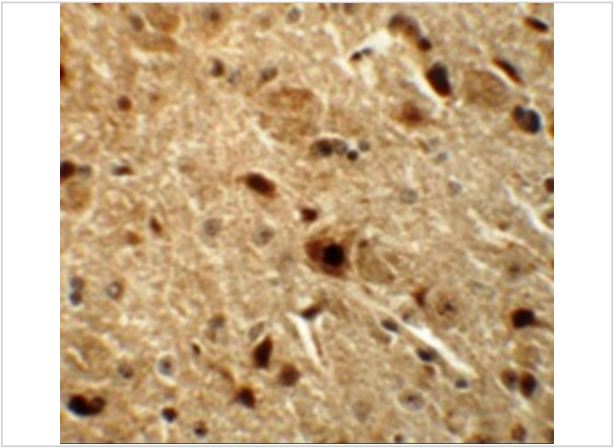
Properties

Purification	BAPX1 Antibody is affinity chromatography purified via peptide column.
Clonality	Polyclonal
Isotype	IgG
Physical State	Liquid
Buffer	BAPX1 Antibody is supplied in PBS containing 0.02% sodium azide.
Concentration	1 mg/mL
Storage Conditions	BAPX1 antibody can be stored at 4°C for three months and -20°C, stable for up to one year. As with all antibodies care should be taken to avoid repeated freeze thaw cycles. Antibodies should not be exposed to prolonged high temperatures.



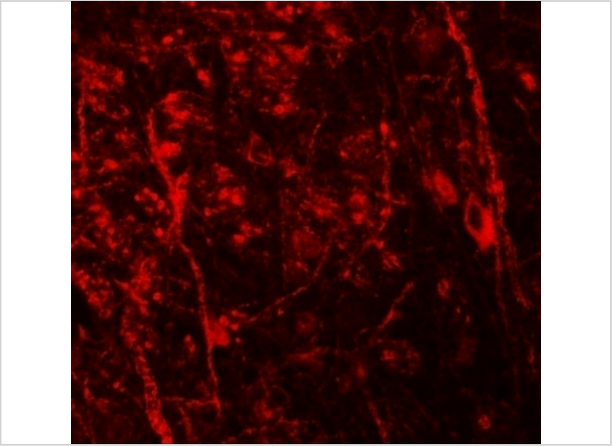
BAPX1 Antibody 1

Western blot analysis of BAPX1 in human brain tissue lysate with BAPX1 antibody at 1 µg/mL in (A) the absence and (B) the presence of blocking peptide.



BAPX1 Antibody 2

Immunohistochemistry of BAPX1 in mouse brain tissue with BAPX1 antibody at 5 µg/mL.



BAPX1 Antibody 3

Immunofluorescence of BAPX1 in mouse brain tissue with BAPX1 antibody at 20 µg/mL.

Disclaimer

Disclaimer	Optimal dilutions/concentrations should be determined by the end user. The information provided is a guideline for product use. This product is for research use only.
------------	--

For research use only. For additional information, visit ProSci's [Terms and Conditions Page](#).