

RBM35B Antibody

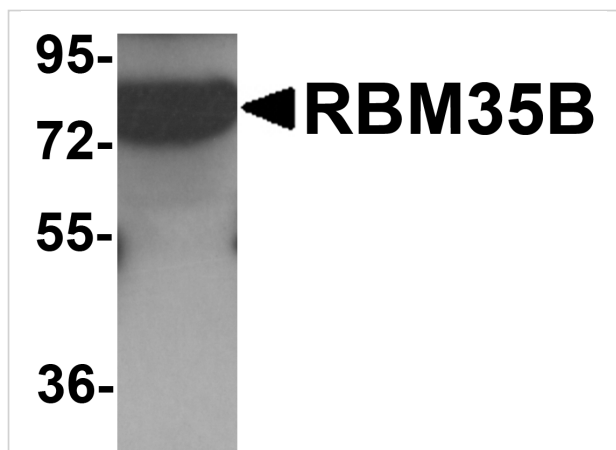
CATALOG NUMBER: 6187

Specifications

Host Species	Rabbit
Species Reactivity	Human, Mouse
Homology	Predicted species reactivity based on immunogen sequence: Rat: (80%)
Immunogen	RBM35B antibody was raised against a 17 amino acid synthetic peptide near the carboxy terminus of human RBM35B. The immunogen is located within the last 50 amino acids of RBM35B.
Conjugate	Unconjugated
Tested Applications	ELISA, IF, IHC-P, WB
User Note	Optimal dilutions for each application to be determined by the researcher.
Specificity	RBM35B antibody is predicted to not cross-react with other RBM35/ESRP family members. At least two isoforms of RBM35B are known to exist; this antibody will detect both isoforms.

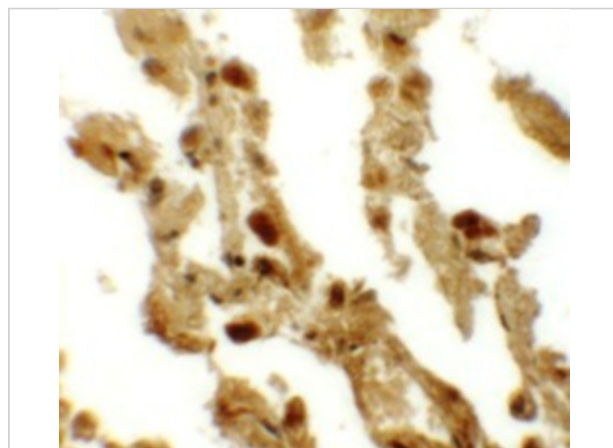
Properties

Purification	RBM35B Antibody is affinity chromatography purified via peptide column.
Clonality	Polyclonal
Isotype	IgG
Physical State	Liquid
Buffer	RBM35B Antibody is supplied in PBS containing 0.02% sodium azide.
Concentration	1 mg/mL
Storage Conditions	RBM35B antibody can be stored at 4°C for three months and -20°C, stable for up to one year. As with all antibodies care should be taken to avoid repeated freeze thaw cycles. Antibodies should not be exposed to prolonged high temperatures.



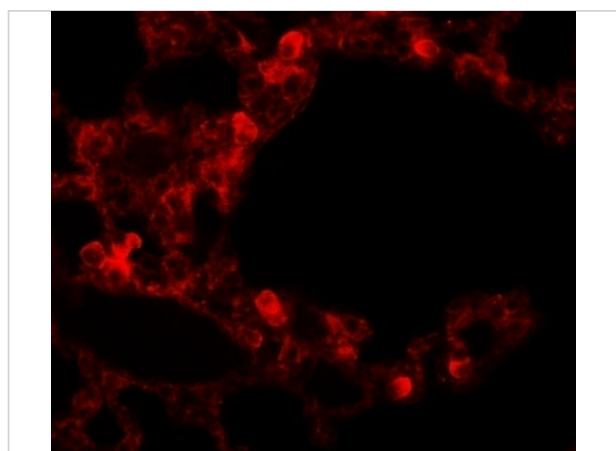
RBM35B Antibody 1

Western blot analysis of RBM35B in human lung tissue lysate with RBM35B antibody at 1 µg/mL.



RBM35B Antibody 2

Immunohistochemistry of RBM35B in human lung tissue with RBM35B antibody at 5 µg/mL.



RBM35B Antibody 3

Immunofluorescence of RBM35B in human lung tissue cells with RBM35B antibody at 20 µg/mL.

Disclaimer

Disclaimer

Optimal dilutions/concentrations should be determined by the end user. The information provided is a guideline for product use. This product is for research use only.

For research use only. For additional information, visit ProSci's [Terms and Conditions Page](#).