

FBXL16 Antibody

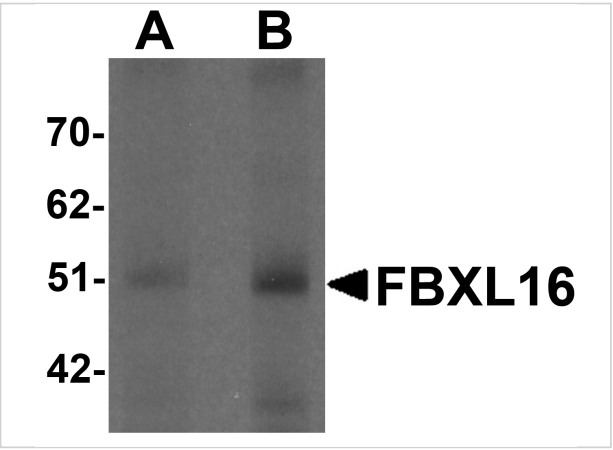
CATALOG NUMBER: 6165

Specifications

Host Species	Rabbit
Species Reactivity	Human, Mouse, Rat
Immunogen	FBXL16 antibody was raised against an 18 amino acid synthetic peptide near the carboxy terminus of human FBXL16. The immunogen is located within the last 50 amino acids of FBXL16.
Conjugate	Unconjugated
Tested Applications	ELISA, IF, IHC-P, WB
User Note	Optimal dilutions for each application to be determined by the researcher.
Specificity	FBXL16 antibody is predicted to not cross-react with other F-box protein family members.

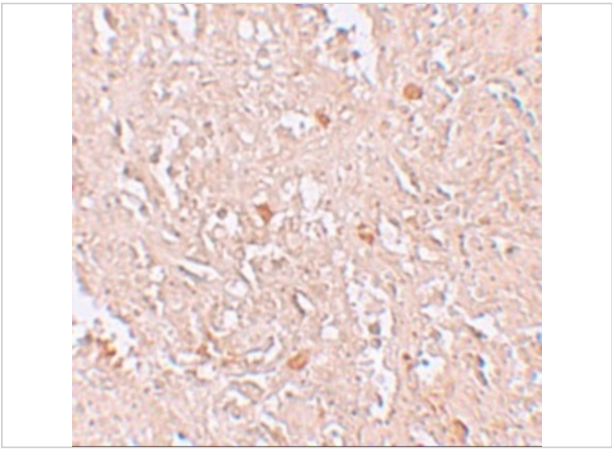
Properties

Purification	FBXL16 Antibody is affinity chromatography purified via peptide column.
Clonality	Polyclonal
Isotype	IgG
Physical State	Liquid
Buffer	FBXL16 Antibody is supplied in PBS containing 0.02% sodium azide.
Concentration	1 mg/mL
Storage Conditions	FBXL16 antibody can be stored at 4°C for three months and -20°C, stable for up to one year. As with all antibodies care should be taken to avoid repeated freeze thaw cycles. Antibodies should not be exposed to prolonged high temperatures.



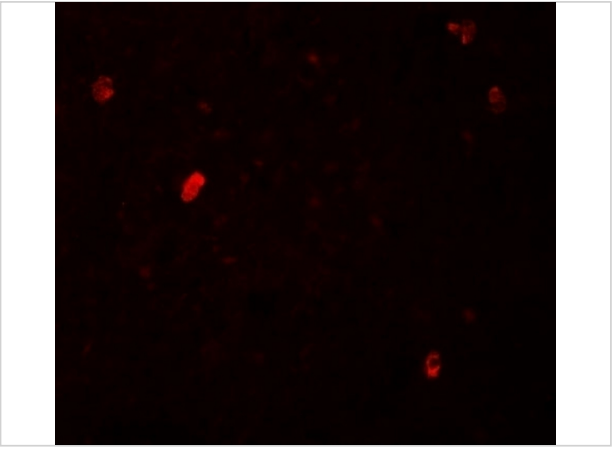
FBXL16 Antibody 1

Western blot analysis of FBXL16 in human spleen tissue lysate with FBXL16 antibody at (A) 0.5 and (B) 1 µg/mL.



FBXL16 Antibody 2

Immunohistochemistry of FBXL16 in human spleen tissue with FBXL16 antibody at 5 µg/mL.



FBXL16 Antibody 3

Immunofluorescence of FBXL16 in human spleen tissue with FBXL16 antibody at 20 µg/mL.

Disclaimer

Disclaimer	Optimal dilutions/concentrations should be determined by the end user. The information provided is a guideline for product use. This product is for research use only.
-------------------	--

For research use only. For additional information, visit ProSci's [Terms and Conditions Page](#).