

ZMYM2 Antibody

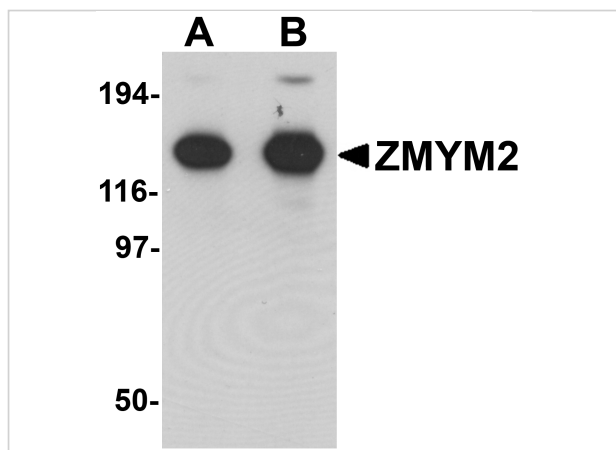
CATALOG NUMBER: 6135

Specifications

Host Species	Rabbit
Species Reactivity	Human, Mouse, Rat
Immunogen	ZMYM2 antibody was raised against a 17 amino acid peptide near the amino terminus of human ZMYM2. The immunogen is located within amino acids 120 - 170 of ZMYM2.
Conjugate	Unconjugated
Tested Applications	ELISA, ICC, IF, WB
User Note	Optimal dilutions for each application to be determined by the researcher.
Specificity	At least two isoforms of ZMYM2 are known to exist; this antibody will detect only the longest isoform. ZMYM2 antibody is predicted to not cross-react with other ZMYM protein family members.

Properties

Purification	ZMYM2 Antibody is affinity chromatography purified via peptide column.
Clonality	Polyclonal
Isotype	IgG
Physical State	Liquid
Buffer	ZMYM2 Antibody is supplied in PBS containing 0.02% sodium azide.
Concentration	1 mg/mL
Storage Conditions	ZMYM2 antibody can be stored at 4°C for three months and -20°C, stable for up to one year. As with all antibodies care should be taken to avoid repeated freeze thaw cycles. Antibodies should not be exposed to prolonged high temperatures.



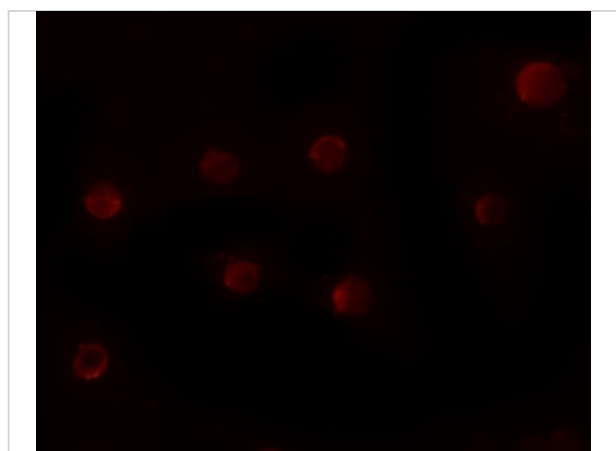
ZMYM2 Antibody 1

Western blot analysis of ZMYM2 in EL4 cell lysate with ZMYM2 antibody at (A) 0.125 and (B) 0.25 $\mu\text{g/mL}$.



ZMYM2 Antibody 2

Immunocytochemistry of ZMYM2 in HeLa cells with ZMYM2 antibody at 10 $\mu\text{g/mL}$.



ZMYM2 Antibody 3

Immunofluorescence of ZMYM2 in HeLa cells with ZMYM2 antibody at 20 $\mu\text{g/mL}$.

Disclaimer

Disclaimer

Optimal dilutions/concentrations should be determined by the end user. The information provided is a guideline for product use. This product is for research use only.

For research use only. For additional information, visit ProSci's [Terms and Conditions Page](#).