

ZBTB6 Antibody

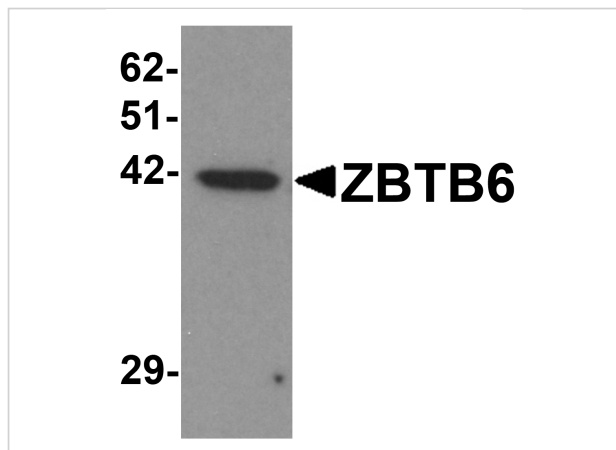
CATALOG NUMBER: 6125

Specifications

Host Species	Rabbit
Species Reactivity	Human, Mouse
Homology	Predicted species reactivity based on immunogen sequence: Bovine: (81%)
Immunogen	ZBTB6 antibody was raised against a 15 amino acid synthetic peptide near the center of human ZBTB6. The immunogen is located within amino acids 180 - 230 of ZBTB6.
Conjugate	Unconjugated
Tested Applications	ELISA, ICC, IF, WB
User Note	Optimal dilutions for each application to be determined by the researcher.
Specificity	At least two isoforms of ZBTB6 are known to exist; this antibody will only recognize the shorter isoform. This antibody is predicted to not cross-react with other ZBTB protein family members.

Properties

Purification	ZBTB6 Antibody is affinity chromatography purified via peptide column.
Clonality	Polyclonal
Isotype	IgG
Physical State	Liquid
Buffer	ZBTB6 Antibody is supplied in PBS containing 0.02% sodium azide.
Concentration	1 mg/mL
Storage Conditions	ZBTB6 antibody can be stored at 4°C for three months and -20°C, stable for up to one year. As with all antibodies care should be taken to avoid repeated freeze thaw cycles. Antibodies should not be exposed to prolonged high temperatures.



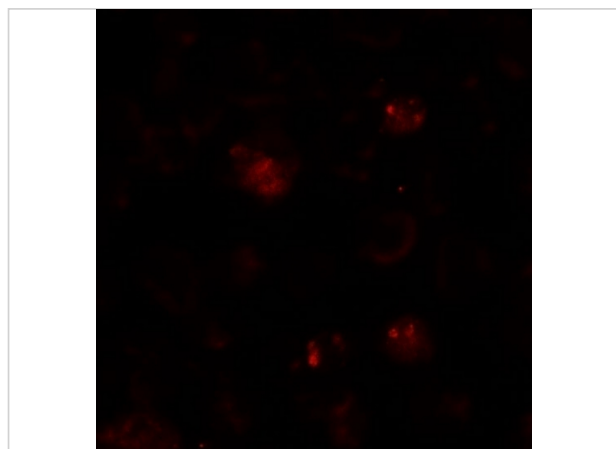
ZBTB6 Antibody 1

Western blot analysis of ZBTB6 in EL4 cell lysate with ZBTB6 antibody at 1 µg/mL.



ZBTB6 Antibody 2

Immunocytochemistry of ZBTB6 in EL4 cells with ZBTB6 antibody at 5 µg/mL.



ZBTB6 Antibody 3

Immunofluorescence of ZBTB6 in EL4 cells with ZBTB6 antibody at 20 µg/mL.

Disclaimer

Disclaimer

Optimal dilutions/concentrations should be determined by the end user. The information provided is a guideline for product use. This product is for research use only.

For research use only. For additional information, visit ProSci's [Terms and Conditions Page](#).