

ZBTB3 Antibody

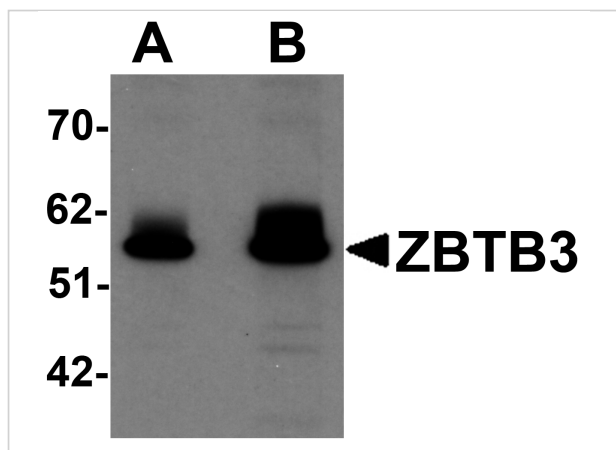
CATALOG NUMBER: 6119

Specifications

Host Species	Rabbit
Species Reactivity	Human, Mouse, Rat
Immunogen	ZBTB3 antibody was raised against a 17 amino acid synthetic peptide near the carboxy terminus of human ZBTB3. The immunogen is located within amino acids 510 - 560 of ZBTB3.
Conjugate	Unconjugated
Tested Applications	ELISA, IF, IHC-P, WB
User Note	Optimal dilutions for each application to be determined by the researcher.
Specificity	At least three isoforms of ZBTB3 are known to exist. This antibody is predicted to not cross-react with other ZBTB protein family members.

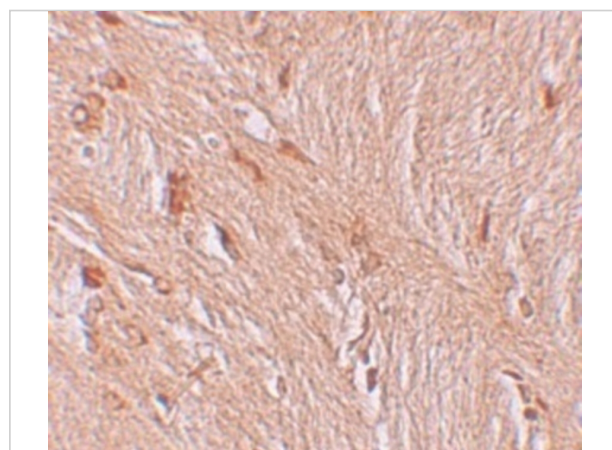
Properties

Purification	ZBTB3 Antibody is affinity chromatography purified via peptide column.
Clonality	Polyclonal
Isotype	IgG
Physical State	Liquid
Buffer	ZBTB3 Antibody is supplied in PBS containing 0.02% sodium azide.
Concentration	1 mg/mL
Storage Conditions	ZBTB3 antibody can be stored at 4°C for three months and -20°C, stable for up to one year. As with all antibodies care should be taken to avoid repeated freeze thaw cycles. Antibodies should not be exposed to prolonged high temperatures.



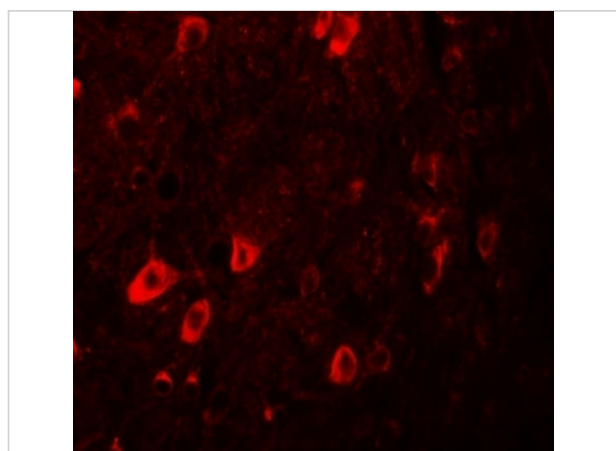
ZBTB3 Antibody 1

Western blot analysis of ZBTB3 in rat brain tissue lysate with ZBTB3 antibody at (A) 1 and (B) 2 $\mu\text{g/mL}$.



ZBTB3 Antibody 2

Immunohistochemistry of ZBTB3 in human brain tissue with ZBTB3 antibody at 2.5 $\mu\text{g/mL}$.



ZBTB3 Antibody 3

Immunofluorescence of ZBTB3 in human brain tissue with ZBTB3 antibody at 20 $\mu\text{g/mL}$.

Disclaimer

Disclaimer

Optimal dilutions/concentrations should be determined by the end user. The information provided is a guideline for product use. This product is for research use only.

For research use only. For additional information, visit ProSci's [Terms and Conditions Page](#).