

## REQUIEM Antibody

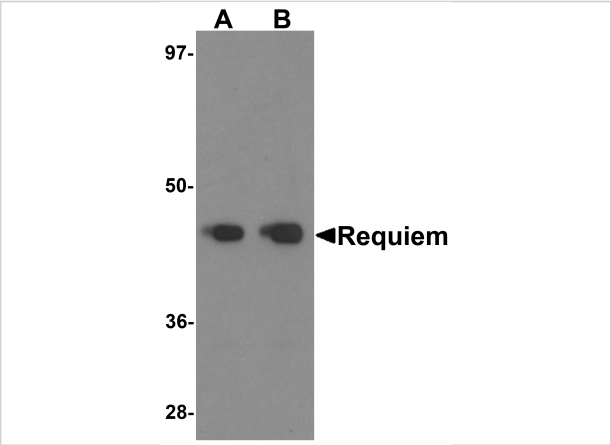
CATALOG NUMBER: 6109

### Specifications

Host Species	Rabbit
Species Reactivity	Human, Mouse
Homology	Predicted species reactivity based on immunogen sequence: Chicken: (94%)
Immunogen	REQUIEM antibody was raised against an 18 amino acid synthetic peptide near the carboxy terminus of human Requiem. The immunogen is located within the last 50 amino acids of REQUIEM.
Conjugate	Unconjugated
Tested Applications	ELISA, IF, IHC-P, WB
User Note	Optimal dilutions for each application to be determined by the researcher.
Specificity	Requiem antibody is predicted to not cross-react with other DPF protein family members.

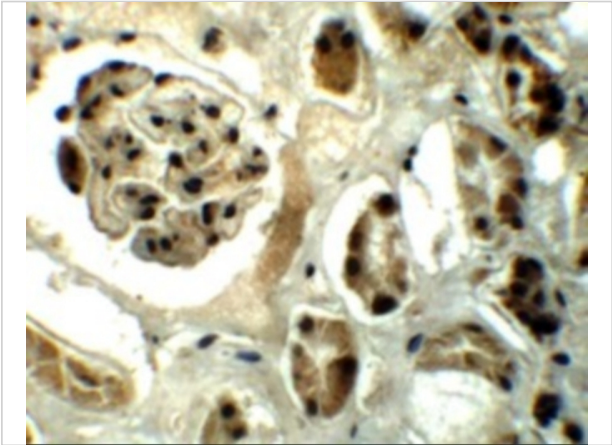
### Properties

Purification	REQUIEM Antibody is affinity chromatography purified via peptide column.
Clonality	Polyclonal
Isotype	IgG
Physical State	Liquid
Buffer	REQUIEM Antibody is supplied in PBS containing 0.02% sodium azide.
Concentration	1 mg/mL
Storage Conditions	REQUIEM antibody can be stored at 4°C for three months and -20°C, stable for up to one year. As with all antibodies care should be taken to avoid repeated freeze thaw cycles. Antibodies should not be exposed to prolonged high temperatures.



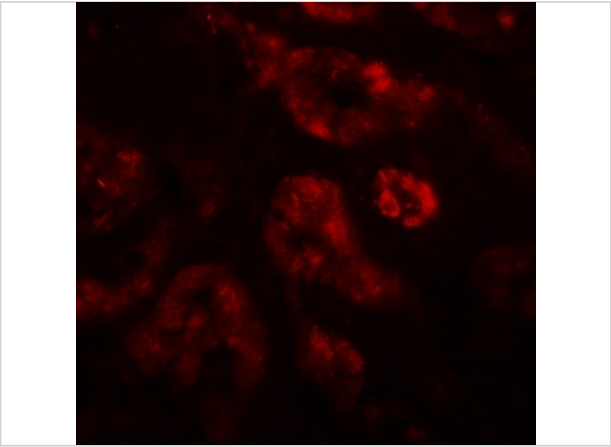
**REQUIEM Antibody 1**

Western blot analysis of Requiem in mouse kidney tissue lysate with Requiem antibody at 1 µg/mL.



**REQUIEM Antibody 2**

Immunohistochemistry of REQUIEM in human kidney tissue with REQUIEM antibody at 5 µg/mL.



**REQUIEM Antibody 3**

Immunofluorescence of REQUIEM in human kidney tissue with REQUIEM antibody at 20 µg/mL.

**Disclaimer**

<b>Disclaimer</b>	Optimal dilutions/concentrations should be determined by the end user. The information provided is a guideline for product use. This product is for research use only.
-------------------	--

For research use only. For additional information, visit ProSci's [Terms and Conditions Page](#).