

KLOTHO Antibody

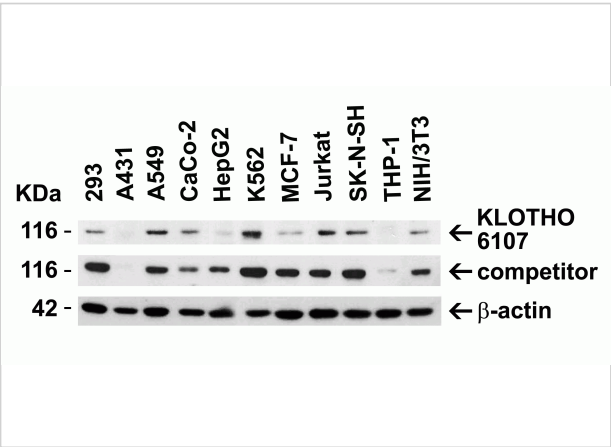
CATALOG NUMBER: 6107

Specifications

Host Species	Rabbit
Species Reactivity	Human, Mouse, Rat
Immunogen	Anti-KLOTHO antibody (6107) was raised against a peptide corresponding to 17 amino acids near the center of human KLOTHO. The immunogen is located within amino acids 410-460 of KLOTHO.
Conjugate	Unconjugated
Tested Applications	ELISA, IF, IHC-P, WB
User Note	Optimal dilutions for each application to be determined by the researcher.
Specificity	Three isoforms of KLOTHO are known to exist.
Predicted Molecular Weight	Predicted: 116kD Observed: 116kD

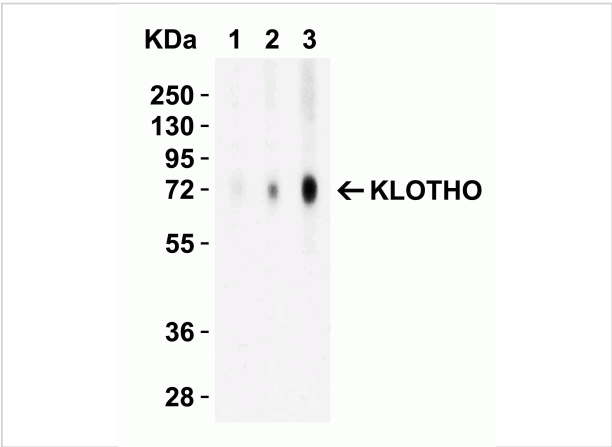
Properties

Purification	KLOTHO Antibody is affinity chromatography purified via peptide column.
Clonality	Polyclonal
Isotype	IgG
Physical State	Liquid
Buffer	KLOTHO Antibody is supplied in PBS containing 0.02% sodium azide.
Concentration	1 mg/mL
Storage Conditions	KLOTHO antibody can be stored at 4°C for three months and -20°C, stable for up to one year. As with all antibodies care should be taken to avoid repeated freeze thaw cycles. Antibodies should not be exposed to prolonged high temperatures.



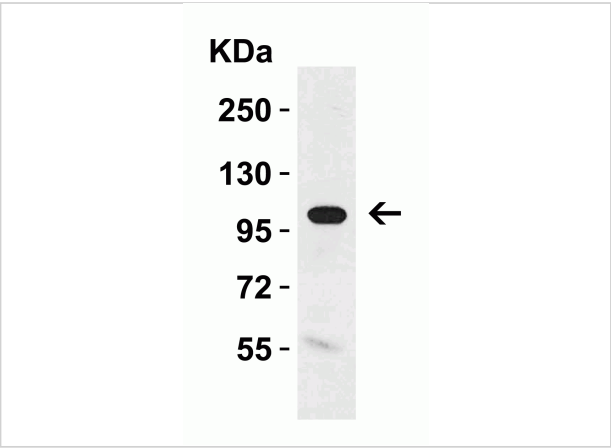
KLOTHO Antibody 1

Figure 1 Independent Antibody Validation (IAV) via Protein Expression Profile in Human and Mouse Cell Lines
 Loading: 15 μ g of lysates per lane. Antibodies: KLOTHO 6107 (2 μ g/mL),...



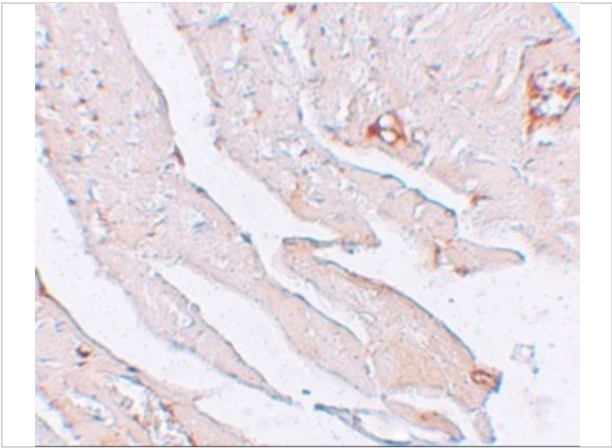
KLOTHO Antibody 2

Figure 2 Western Blot Validation with Recombinant Protein
 Loading: 30 ng of human KLOTHO recombinant protein per lane. Antibodies: KLOTHO 6107 (Lane 1: 1 μ g/mL, Lane 2: 2 μ g/mL a...



KLOTHO Antibody 3

Figure 3 Western Blot Validation in Rat Kidney Tissue Lysate
 Loading: 15 μ g of lysates per lane. Antibodies: KLOTHO 6107 (1 μ g/mL), 1h incubation at RT in 5% NFDH/TBST. Secondary:...



KLOTHO Antibody 4

Figure 4 Immunohistochemistry Validation of KLOTHO in Mouse Heart Tissue
 Immunohistochemical analysis of paraffin-embedded mouse heart tissue using anti-KLOTHO antibody (6107)...

Disclaimer

Disclaimer	Optimal dilutions/concentrations should be determined by the end user. The information provided is a guideline for product use. This product is for research use only.
-------------------	--

For research use only. For additional information, visit ProSci's [Terms and Conditions Page](#).