

CTRP6 Antibody

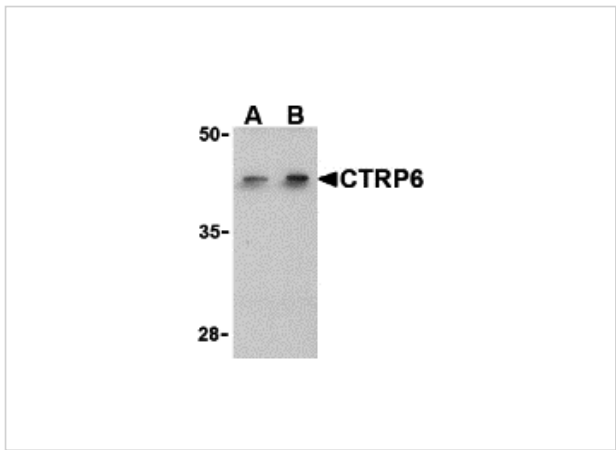
CATALOG NUMBER: 3575

Specifications

Host Species	Rabbit
Species Reactivity	Human, Mouse
Homology	Predicted species reactivity based on immunogen sequence: Rat: (80%)
Immunogen	CTRP6 antibody was raised against a 15 amino acid synthetic peptide from near the carboxy terminus of human CTRP6. The immunogen is located within the last 50 amino acids of CTRP6.
Conjugate	Unconjugated
Tested Applications	ELISA, ICC, IF, WB
User Note	Optimal dilutions for each application to be determined by the researcher.
Specificity	These proteins often migrate in SDS-PAGE at positions other than their predicted size.

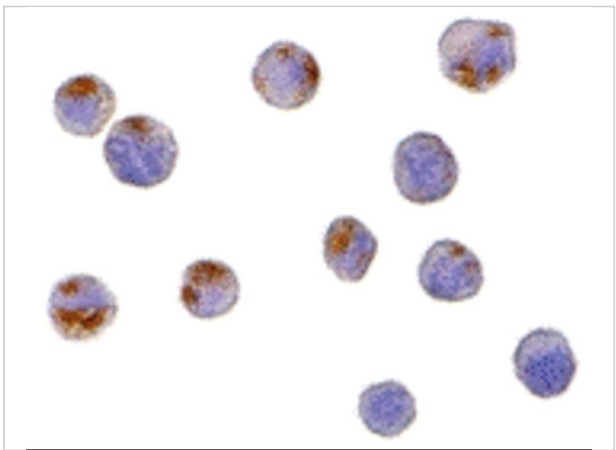
Properties

Purification	CTRP6 Antibody is affinity chromatography purified via peptide column.
Clonality	Polyclonal
Isotype	IgG
Physical State	Liquid
Buffer	CTRP6 Antibody is supplied in PBS containing 0.02% sodium azide.
Concentration	1 mg/mL
Storage Conditions	CTRP6 antibody can be stored at 4°C for three months and -20°C, stable for up to one year. As with all antibodies care should be taken to avoid repeated freeze thaw cycles. Antibodies should not be exposed to prolonged high temperatures.



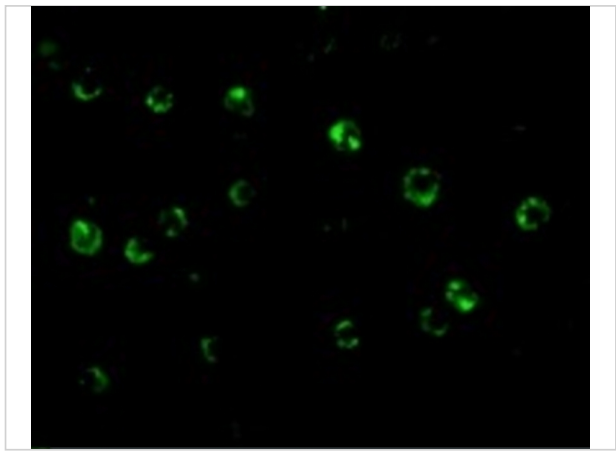
CTRP6 Antibody 1

Western blot analysis of CTRP6 in HeLa cell lysate with CTRP6 antibody at (A) 1 and (B) 2 $\mu\text{g/mL}$.



CTRP6 Antibody 2

Immunocytochemistry of CTRP6 in HeLa cells with CTRP6 antibody at 10 $\mu\text{g/mL}$.



CTRP6 Antibody 3

Immunofluorescence of CTRP6 in HeLa cells with CTRP6 antibody at 20 $\mu\text{g/mL}$.

Disclaimer

Disclaimer	Optimal dilutions/concentrations should be determined by the end user. The information provided is a guideline for product use. This product is for research use only.
-------------------	--

For research use only. For additional information, visit ProSci's [Terms and Conditions Page](#).