

ZIP12 Antibody

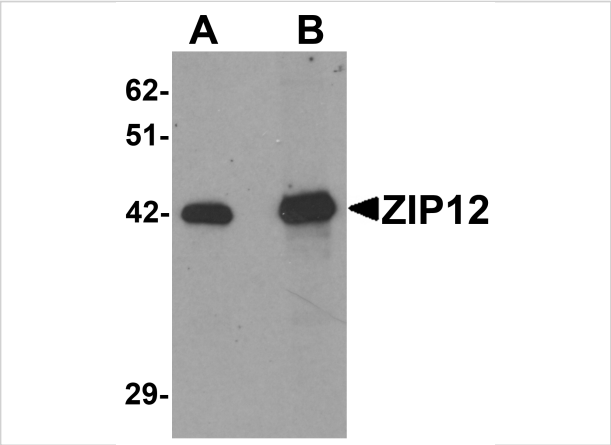
CATALOG NUMBER: 6101

Specifications

Host Species	Rabbit
Species Reactivity	Human, Mouse
Homology	Predicted species reactivity based on immunogen sequence: Bovine: (77%)
Immunogen	ZIP12 antibody was raised against a 15 amino acid synthetic peptide near the amino terminus of human ZIP12. The immunogen is located within the first 50 amino acids of ZIP12.
Conjugate	Unconjugated
Tested Applications	ELISA, IF, IHC-P, WB
User Note	Optimal dilutions for each application to be determined by the researcher.
Specificity	At least four isoforms of ZIP12 are known to exist. ZIP12 antibody is predicted to not cross-react with other ZIP family members.

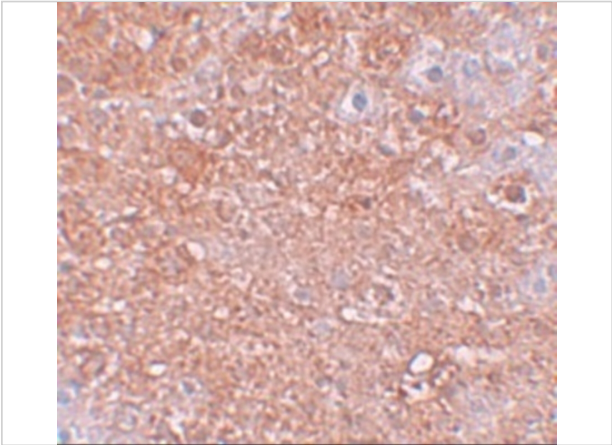
Properties

Purification	ZIP12 Antibody is affinity chromatography purified via peptide column.
Clonality	Polyclonal
Isotype	IgG
Physical State	Liquid
Buffer	ZIP12 Antibody is supplied in PBS containing 0.02% sodium azide.
Concentration	1 mg/mL
Storage Conditions	ZIP12 antibody can be stored at 4°C for three months and -20°C, stable for up to one year. As with all antibodies care should be taken to avoid repeated freeze thaw cycles. Antibodies should not be exposed to prolonged high temperatures.



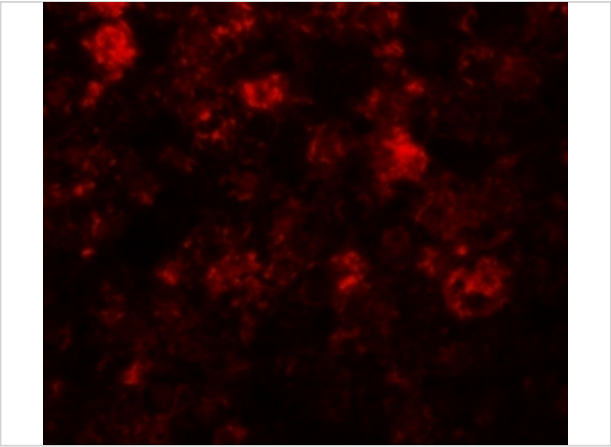
ZIP12 Antibody 1

Western blot analysis of ZIP12 in HepG2 cell lysate with ZIP12 antibody at (A) 0.5 and (B) 1 µg/mL.



ZIP12 Antibody 2

Immunohistochemistry of ZIP12 in mouse liver tissue with ZIP12 antibody at 2.5 µg/mL.



ZIP12 Antibody 3

Immunofluorescence of ZIP12 in mouse liver tissue with ZIP12 antibody at 20 µg/mL.

Disclaimer

Disclaimer	Optimal dilutions/concentrations should be determined by the end user. The information provided is a guideline for product use. This product is for research use only.
------------	--

For research use only. For additional information, visit ProSci's [Terms and Conditions Page](#).