

ZIP3 Antibody

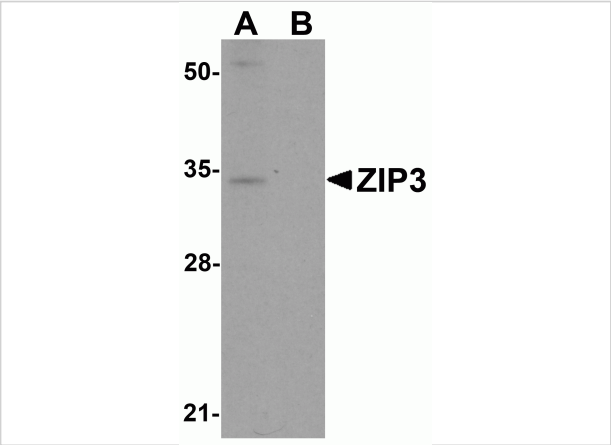
CATALOG NUMBER: 6085

Specifications

Host Species	Rabbit
Species Reactivity	Human, Mouse
Homology	Predicted species reactivity based on immunogen sequence: Rat: (94%), Bovine: (88%)
Immunogen	ZIP3 antibody was raised against a 16 amino acid synthetic peptide near the center of human ZIP3. The immunogen is located within amino acids 110 - 160 of ZIP3.
Conjugate	Unconjugated
Tested Applications	ELISA, IHC-P, WB
User Note	Optimal dilutions for each application to be determined by the researcher.

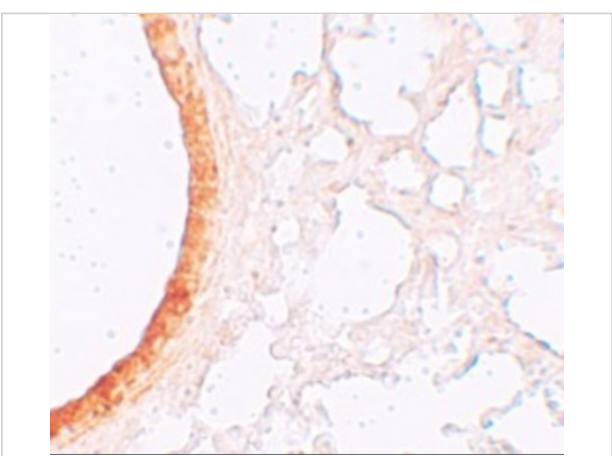
Properties

Purification	ZIP3 Antibody is affinity chromatography purified via peptide column.
Clonality	Polyclonal
Isotype	IgG
Physical State	Liquid
Buffer	ZIP3 Antibody is supplied in PBS containing 0.02% sodium azide.
Concentration	1 mg/mL
Storage Conditions	ZIP3 antibody can be stored at 4°C for three months and -20°C, stable for up to one year. As with all antibodies care should be taken to avoid repeated freeze thaw cycles. Antibodies should not be exposed to prolonged high temperatures.



ZIP3 Antibody 1

Western blot analysis of ZIP3 in mouse lung tissue lysate with ZIP3 antibody at 1 µg/mL in (A) the absence and (B) the presence of blocking peptide.



ZIP3 Antibody 2

Immunohistochemistry of ZIP3 in mouse lung tissue with ZIP3 antibody at 5 µg/mL.

Disclaimer

Disclaimer	Optimal dilutions/concentrations should be determined by the end user. The information provided is a guideline for product use. This product is for research use only.
------------	--

For research use only. For additional information, visit ProSci's [Terms and Conditions Page](#).