

SYNPO2L Antibody

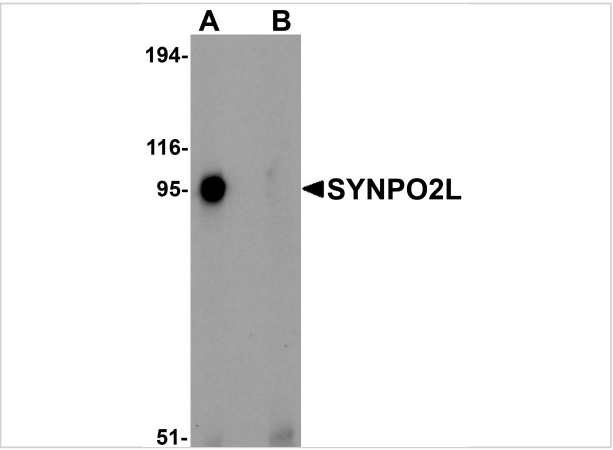
CATALOG NUMBER: 6053

Specifications

Host Species	Rabbit
Species Reactivity	Human, Mouse
Immunogen	SYNPO2L antibody was raised against a 19 amino acid synthetic peptide near the amino terminus of human SYNPO2L. The immunogen is located within amino acids 140 - 190 of SYNPO2L.
Conjugate	Unconjugated
Tested Applications	ELISA, IF, WB
User Note	Optimal dilutions for each application to be determined by the researcher.

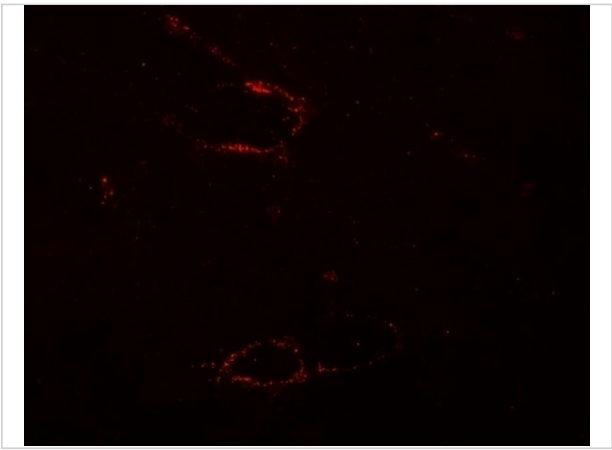
Properties

Purification	SYNPO2L Antibody is affinity chromatography purified via peptide column.
Clonality	Polyclonal
Isotype	IgG
Physical State	Liquid
Buffer	SYNPO2L Antibody is supplied in PBS containing 0.02% sodium azide.
Concentration	1 mg/mL
Storage Conditions	SYNPO2L antibody can be stored at 4°C for three months and -20°C, stable for up to one year. As with all antibodies care should be taken to avoid repeated freeze thaw cycles. Antibodies should not be exposed to prolonged high temperatures.



SYNPO2L Antibody 1

Western blot analysis of SYNPO2L in human thymus tissue lysate with SYNPO2L antibody at 1 µg/mL in (A) the absence and (B) the presence of blocking peptide.



SYNPO2L Antibody 2

Immunofluorescence of SYNPO2L in mouse skeletal muscle tissue with SYNPO2L antibody at 20 µg/mL.

Disclaimer

Disclaimer	Optimal dilutions/concentrations should be determined by the end user. The information provided is a guideline for product use. This product is for research use only.
------------	--

For research use only. For additional information, visit ProSci's [Terms and Conditions Page](#).