

SYNPO2 Antibody

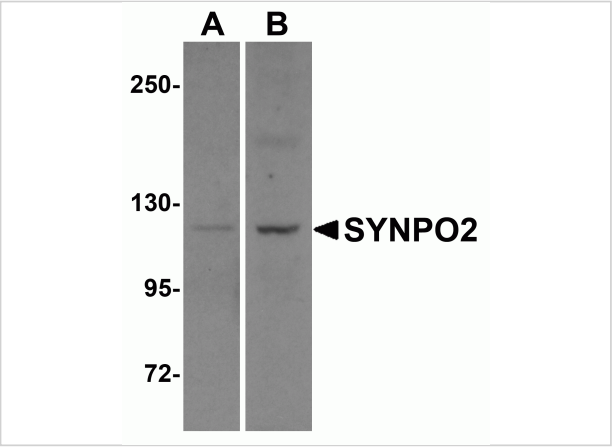
CATALOG NUMBER: 6051

Specifications

Host Species	Rabbit
Species Reactivity	Human, Mouse
Immunogen	SYNPO2 antibody was raised against a 20 amino acid synthetic peptide near the amino terminus of human SYNPO2. The immunogen is located within amino acids 320 - 370 of SYNPO2.
Conjugate	Unconjugated
Tested Applications	ELISA, IF, IHC-P, WB
User Note	Optimal dilutions for each application to be determined by the researcher.

Properties

Purification	SYNPO2 Antibody is affinity chromatography purified via peptide column.
Clonality	Polyclonal
Isotype	IgG
Physical State	Liquid
Buffer	SYNPO2 Antibody is supplied in PBS containing 0.02% sodium azide.
Concentration	1 mg/mL
Storage Conditions	SYNPO2 antibody can be stored at 4°C for three months and -20°C, stable for up to one year. As with all antibodies care should be taken to avoid repeated freeze thaw cycles. Antibodies should not be exposed to prolonged high temperatures.



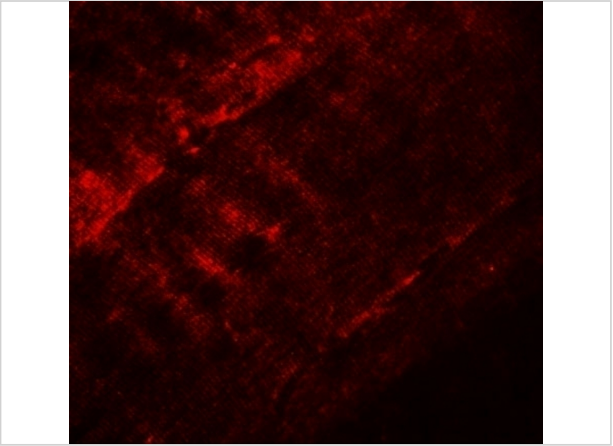
SYNPO2 Antibody 1

Western blot analysis of SYNPO2 in human skeletal muscle tissue lysate with SYNPO2 antibody at 1 µg/mL in (A) the absence and (B) the presence of blocking peptide.



SYNPO2 Antibody 2

Immunohistochemistry of SYNPO2 in mouse skeletal muscle tissue with SYNPO2 antibody at 5 µg/mL.



SYNPO2 Antibody 3

Immunofluorescence of SYNPO2 in mouse skeletal muscle tissue with SYNPO2 antibody at 20 µg/mL.

Disclaimer

Disclaimer	Optimal dilutions/concentrations should be determined by the end user. The information provided is a guideline for product use. This product is for research use only.
-------------------	--

For research use only. For additional information, visit ProSci's [Terms and Conditions Page](#).