

CTRP4 Antibody

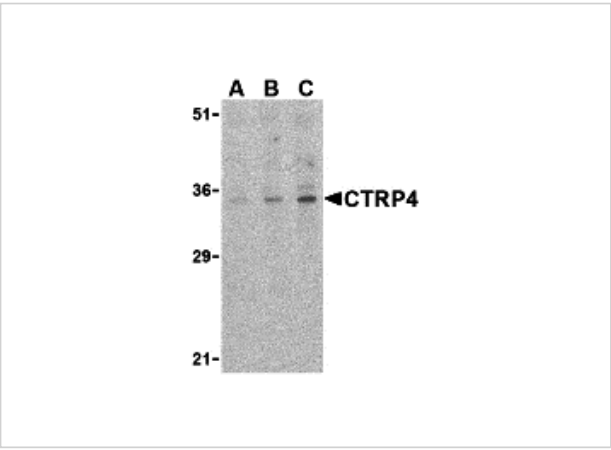
CATALOG NUMBER: 3567

Specifications

Host Species	Rabbit
Species Reactivity	Human, Mouse, Rat
Immunogen	CTRP4 antibody was raised against a 16 amino acid synthetic peptide from near the carboxy terminus of human CTRP4. The immunogen is located within amino acids 240 - 290 of CTRP4.
Conjugate	Unconjugated
Tested Applications	ELISA, IF, IHC-P, WB
User Note	Optimal dilutions for each application to be determined by the researcher.
Specificity	These proteins are often highly modified post-translationally and migrate in SDS-PAGE at positions other than their predicted size.

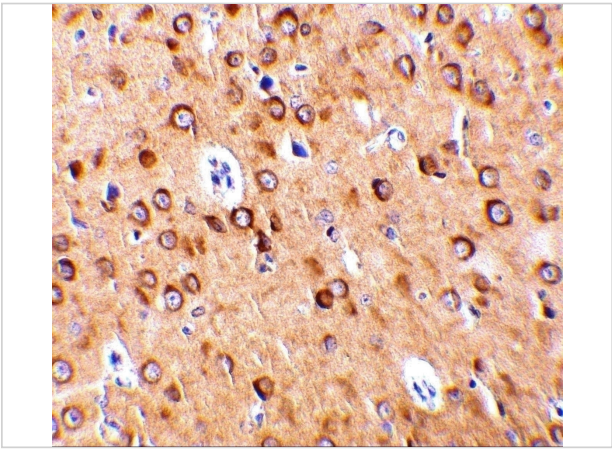
Properties

Purification	CTRP4 Antibody is affinity chromatography purified via peptide column.
Clonality	Polyclonal
Isotype	IgG
Physical State	Liquid
Buffer	CTRP4 Antibody is supplied in PBS containing 0.02% sodium azide.
Concentration	1 mg/mL
Storage Conditions	CTRP4 antibody can be stored at 4°C for three months and -20°C, stable for up to one year. As with all antibodies care should be taken to avoid repeated freeze thaw cycles. Antibodies should not be exposed to prolonged high temperatures.



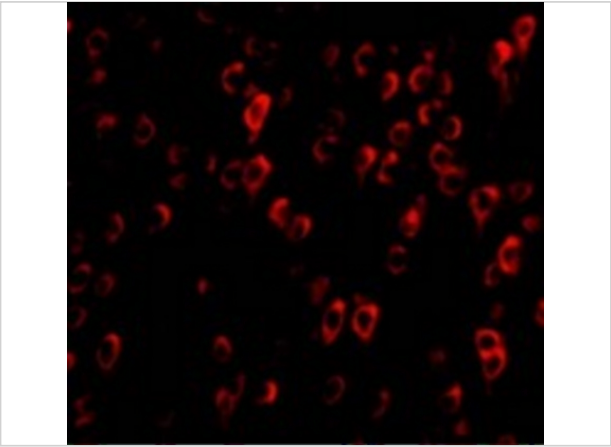
CTRP4 Antibody 1

Western blot analysis of CTRP4 in rat brain cell lysate with CTRP4 antibody at (A) 1, (B) 2, and (C) 4 µg/mL.



CTRP4 Antibody 2

Immunohistochemistry of CTRP4 in rat brain with CTRP4 antibody at 10 µg/mL.



CTRP4 Antibody 3

Immunofluorescence of CTRP4 in Rat Brain cells with CTRP4 antibody at 20 µg/mL.

Disclaimer

Disclaimer	Optimal dilutions/concentrations should be determined by the end user. The information provided is a guideline for product use. This product is for research use only.
------------	--

For research use only. For additional information, visit ProSci's [Terms and Conditions Page](#).