

## LMBRD1 Antibody

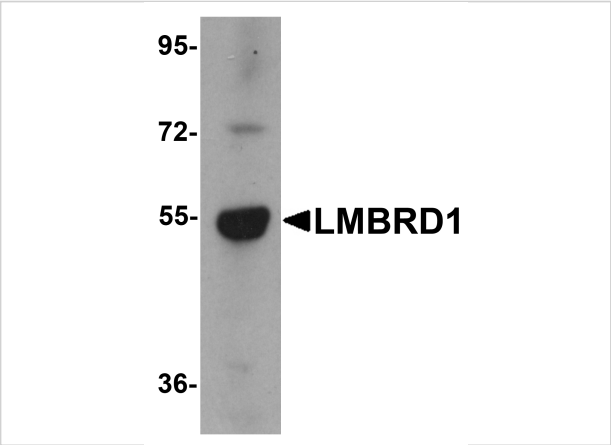
CATALOG NUMBER: 6047

### Specifications

Host Species	Rabbit
Species Reactivity	Human, Mouse, Rat
Immunogen	LMBRD1 antibody was raised against an 18 amino acid synthetic peptide near the carboxy terminus of human LMBRD1. The immunogen is located within the last 50 amino acids of LMBRD1.
Conjugate	Unconjugated
Tested Applications	ELISA, IF, IHC-P, WB
User Note	Optimal dilutions for each application to be determined by the researcher.

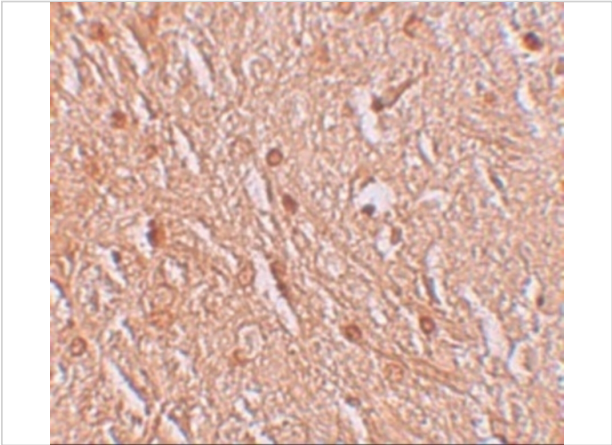
### Properties

Purification	LMBRD1 Antibody is affinity chromatography purified via peptide column.
Clonality	Polyclonal
Isotype	IgG
Physical State	Liquid
Buffer	LMBRD1 Antibody is supplied in PBS containing 0.02% sodium azide.
Concentration	1 mg/mL
Storage Conditions	LMBRD1 antibody can be stored at 4°C for three months and -20°C, stable for up to one year. As with all antibodies care should be taken to avoid repeated freeze thaw cycles. Antibodies should not be exposed to prolonged high temperatures.



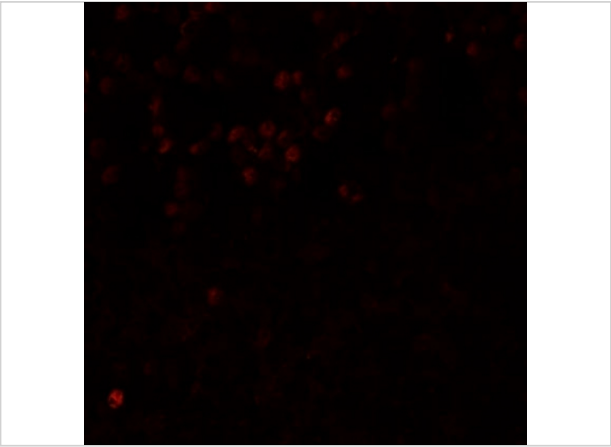
LMBRD1 Antibody 1

Western blot analysis of LMBRD1 in human brain tissue lysate with LMBRD1 antibody at 1 µg/mL.



LMBRD1 Antibody 2

Immunohistochemistry of LMBRD1 in human brain tissue with LMBRD1 antibody at 2.5 µg/mL.



LMBRD1 Antibody 3

Immunofluorescence of LMBRD1 in human brain tissue with LMBRD1 antibody at 20 µg/mL.

Disclaimer

Disclaimer	Optimal dilutions/concentrations should be determined by the end user. The information provided is a guideline for product use. This product is for research use only.
------------	--

For research use only. For additional information, visit ProSci's [Terms and Conditions Page](#).