

EFCAB4B Antibody

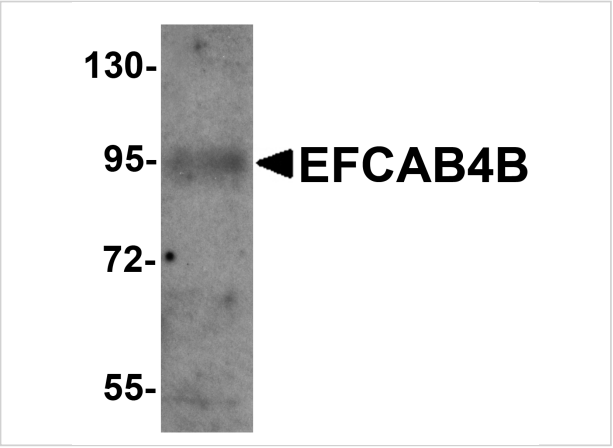
CATALOG NUMBER: 6045

Specifications

Host Species	Rabbit
Species Reactivity	Human, Mouse
Immunogen	EFCAB4B antibody was raised against a 14 amino acid synthetic peptide near the carboxy terminus of human EFCAB4B. The immunogen is located within amino acids 640 - 690 of EFCAB4B.
Conjugate	Unconjugated
Tested Applications	ELISA, IF, IHC-P, WB
User Note	Optimal dilutions for each application to be determined by the researcher.

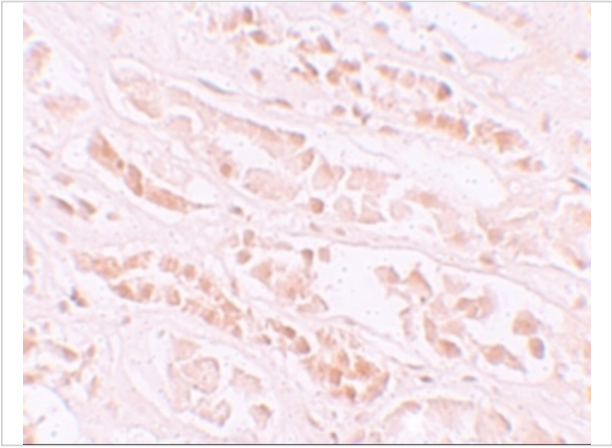
Properties

Purification	EFCAB4B Antibody is affinity chromatography purified via peptide column.
Clonality	Polyclonal
Isotype	IgG
Physical State	Liquid
Buffer	EFCAB4B Antibody is supplied in PBS containing 0.02% sodium azide.
Concentration	1 mg/mL
Storage Conditions	EFCAB4B antibody can be stored at 4°C for three months and -20°C, stable for up to one year. As with all antibodies care should be taken to avoid repeated freeze thaw cycles. Antibodies should not be exposed to prolonged high temperatures.



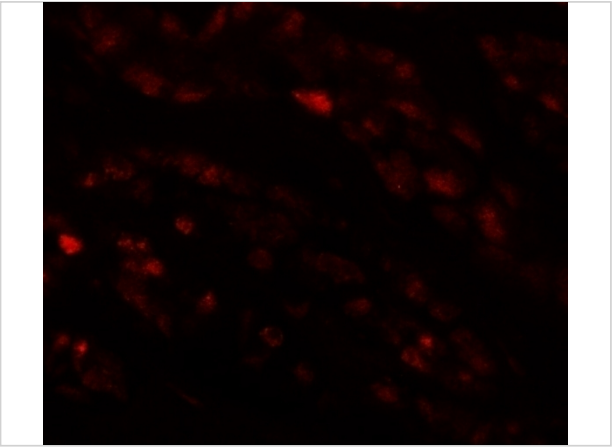
EFCAB4B Antibody 1

Western blot analysis of EFCAB4B in mouse kidney tissue lysate with EFCAB4B antibody at 1 µg/mL.



EFCAB4B Antibody 2

Immunohistochemistry of EFCAB4B in human kidney tissue with EFCAB4B antibody at 10 µg/mL.



EFCAB4B Antibody 3

Immunofluorescence of EFCAB4B in human kidney tissue with EFCAB4B antibody at 20 µg/mL.

Disclaimer

Disclaimer	Optimal dilutions/concentrations should be determined by the end user. The information provided is a guideline for product use. This product is for research use only.
------------	--

For research use only. For additional information, visit ProSci's [Terms and Conditions Page](#).