

## CTRP2 Antibody

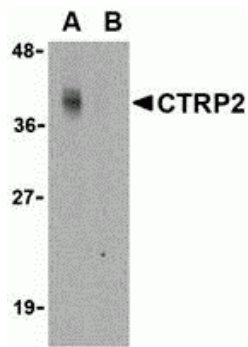
CATALOG NUMBER: 3561

### Specifications

<b>Host Species</b>	Rabbit
<b>Species Reactivity</b>	Human, Mouse
<b>Immunogen</b>	CTRP2 antibody was raised against a 16 amino acid synthetic peptide from near the amino-terminus of human CTRP2. The immunogen is located within amino acids 50 - 100 of CTRP2.
<b>Conjugate</b>	Unconjugated
<b>Tested Applications</b>	ELISA, WB
<b>User Note</b>	Optimal dilutions for each application to be determined by the researcher.
<b>Specificity</b>	These proteins are often highly modified post-translationally and migrate in SDS-PAGE at positions other than their predicted size.

### Properties

<b>Purification</b>	CTRP2 Antibody is affinity chromatography purified via peptide column.
<b>Clonality</b>	Polyclonal
<b>Isotype</b>	IgG
<b>Physical State</b>	Liquid
<b>Buffer</b>	CTRP2 Antibody is supplied in PBS containing 0.02% sodium azide.
<b>Concentration</b>	1 mg/mL
<b>Storage Conditions</b>	CTRP2 antibody can be stored at 4°C for three months and -20°C, stable for up to one year. As with all antibodies care should be taken to avoid repeated freeze thaw cycles. Antibodies should not be exposed to prolonged high temperatures.



## CTRP2 Antibody 1

Western blot analysis of CTRP2 in Caco-2 cell lysate with CTRP2 antibody at 1 µg/mL in either the (A) absence or (B) presence of blocking peptide.

## Disclaimer

Disclaimer	Optimal dilutions/concentrations should be determined by the end user. The information provided is a guideline for product use. This product is for research use only.
------------	--

For research use only. For additional information, visit ProSci's [Terms and Conditions Page](#).