

MFSD1 Antibody

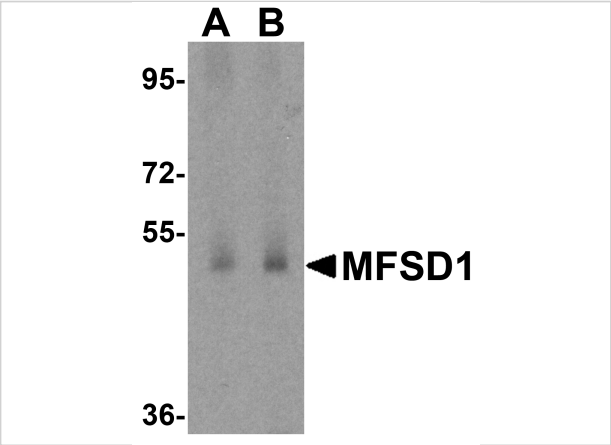
CATALOG NUMBER: 6023

Specifications

Host Species	Rabbit
Species Reactivity	Human, Mouse, Rat
Homology	Predicted species reactivity based on immunogen sequence: Bovine: (100%), Chicken: (78%)
Immunogen	MFSD1 antibody was raised against an 18 amino acid synthetic peptide near the center of human MFSD1. The immunogen is located within amino acids 220 - 270 of MFSD1.
Conjugate	Unconjugated
Tested Applications	ELISA, IHC-P, WB
User Note	Optimal dilutions for each application to be determined by the researcher.

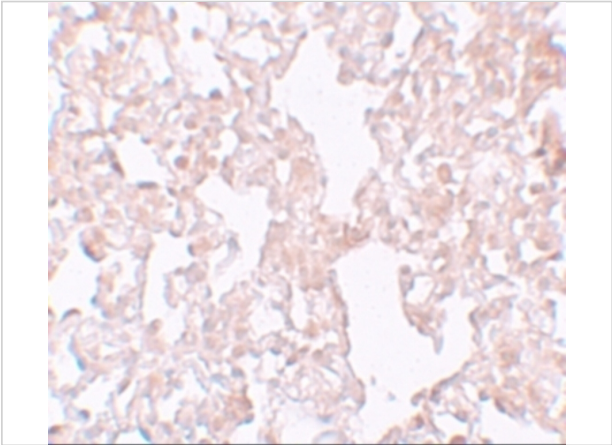
Properties

Purification	MFSD1 Antibody is affinity chromatography purified via peptide column.
Clonality	Polyclonal
Isotype	IgG
Physical State	Liquid
Buffer	MFSD1 Antibody is supplied in PBS containing 0.02% sodium azide.
Concentration	1 mg/mL
Storage Conditions	MFSD1 antibody can be stored at 4°C for three months and -20°C, stable for up to one year. As with all antibodies care should be taken to avoid repeated freeze thaw cycles. Antibodies should not be exposed to prolonged high temperatures.



MFSD1 Antibody 1

Western blot analysis of MFSD1 in human testis tissue lysate with MFSD1 antibody at (A) 1 and (B) 2 µg/mL.



MFSD1 Antibody 2

Immunohistochemistry of MFSD1 in rat lung tissue with MFSD1 antibody at 10 µg/mL.

Disclaimer

Disclaimer	Optimal dilutions/concentrations should be determined by the end user. The information provided is a guideline for product use. This product is for research use only.
------------	--

For research use only. For additional information, visit ProSci's [Terms and Conditions Page](#).