

PLAC4 Antibody

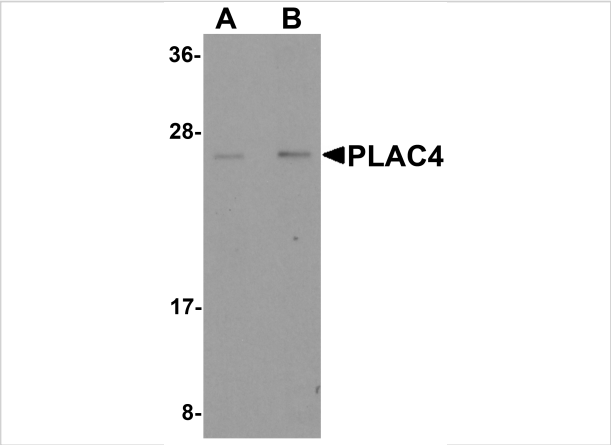
CATALOG NUMBER: 6021

Specifications

Host Species	Rabbit
Species Reactivity	Human
Immunogen	PLAC4 antibody was raised against a 17 amino acid synthetic peptide near the center of human PLAC4. The immunogen is located within amino acids 20 - 70 of PLAC4.
Conjugate	Unconjugated
Tested Applications	ELISA, ICC, IF, WB
User Note	Optimal dilutions for each application to be determined by the researcher.

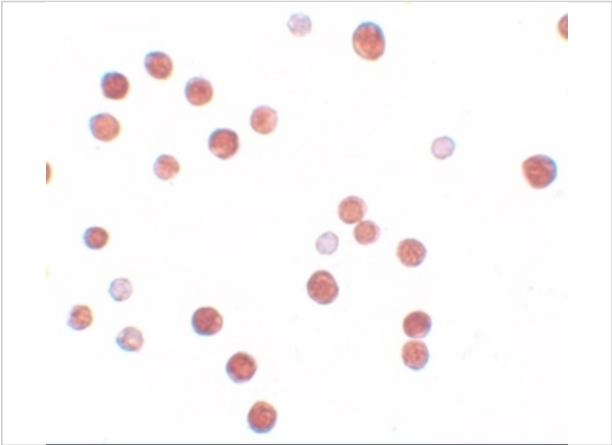
Properties

Purification	PLAC4 Antibody is affinity chromatography purified via peptide column.
Clonality	Polyclonal
Isotype	IgG
Physical State	Liquid
Buffer	PLAC4 Antibody is supplied in PBS containing 0.02% sodium azide.
Concentration	1 mg/mL
Storage Conditions	PLAC4 antibody can be stored at 4°C for three months and -20°C, stable for up to one year. As with all antibodies care should be taken to avoid repeated freeze thaw cycles. Antibodies should not be exposed to prolonged high temperatures.



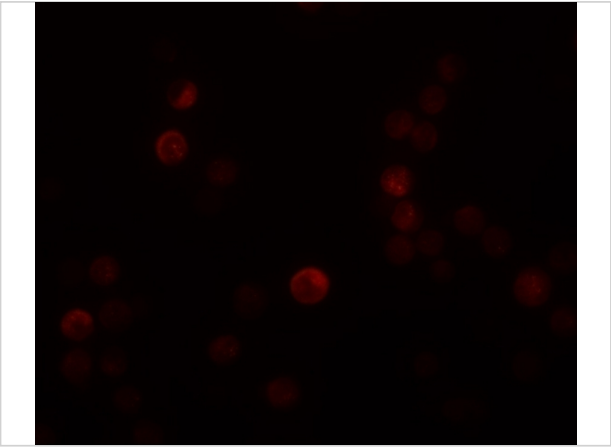
PLAC4 Antibody 1

Western blot analysis of PLAC4 in human placenta tissue lysate with PLAC4 antibody at (A) 1 and (B) 2 $\mu\text{g/mL}$.



PLAC4 Antibody 2

Immunocytochemistry of PLAC4 in HeLa cells with PLAC4 antibody at 10 $\mu\text{g/mL}$.



PLAC4 Antibody 3

Immunofluorescence of PLAC4 in HeLa cells with PLAC4 antibody at 20 $\mu\text{g/mL}$.

Disclaimer

Disclaimer	Optimal dilutions/concentrations should be determined by the end user. The information provided is a guideline for product use. This product is for research use only.
-------------------	--

For research use only. For additional information, visit ProSci's [Terms and Conditions Page](#).