

PLAC2 Antibody

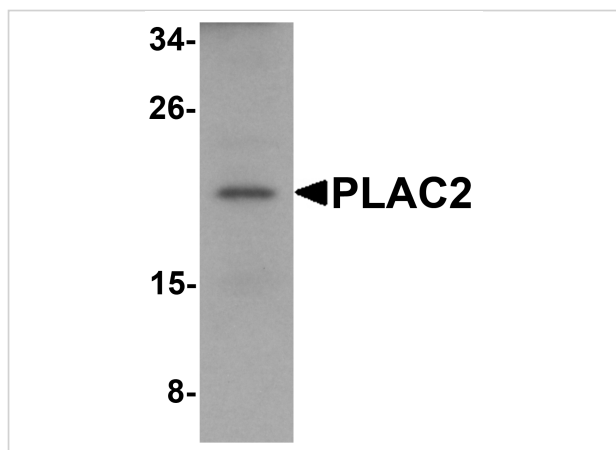
CATALOG NUMBER: 6017

Specifications

Host Species	Rabbit
Species Reactivity	Human
Immunogen	PLAC2 antibody was raised against a 17 amino acid synthetic peptide near the center of human PLAC2. The immunogen is located within amino acids 60 - 110 of PLAC2.
Conjugate	Unconjugated
Tested Applications	ELISA, ICC, IF, WB
User Note	Optimal dilutions for each application to be determined by the researcher.

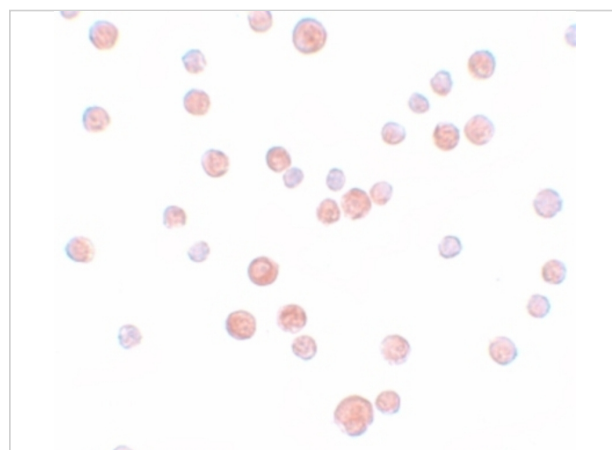
Properties

Purification	PLAC2 Antibody is affinity chromatography purified via peptide column.
Clonality	Polyclonal
Isotype	IgG
Physical State	Liquid
Buffer	PLAC2 Antibody is supplied in PBS containing 0.02% sodium azide.
Concentration	1 mg/mL
Storage Conditions	PLAC2 antibody can be stored at 4°C for three months and -20°C, stable for up to one year. As with all antibodies care should be taken to avoid repeated freeze thaw cycles. Antibodies should not be exposed to prolonged high temperatures.



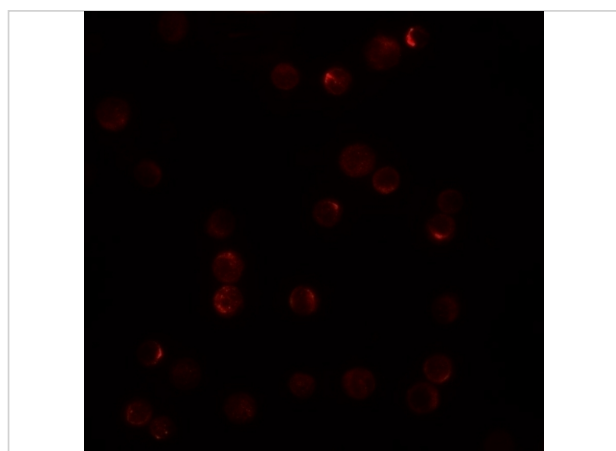
PLAC2 Antibody 1

Western blot analysis of PLAC2 in HeLa cell lysate with PLAC2 antibody at 1 µg/mL.



PLAC2 Antibody 2

Immunocytochemistry of PLAC2 in HeLa cells with PLAC2 antibody at 10 µg/mL.



PLAC2 Antibody 3

Immunofluorescence of PLAC2 in HeLa cells with PLAC2 antibody at 20 µg/mL.

Disclaimer

Disclaimer

Optimal dilutions/concentrations should be determined by the end user. The information provided is a guideline for product use. This product is for research use only.

For research use only. For additional information, visit ProSci's [Terms and Conditions Page](#).