

## CTRP1 Antibody

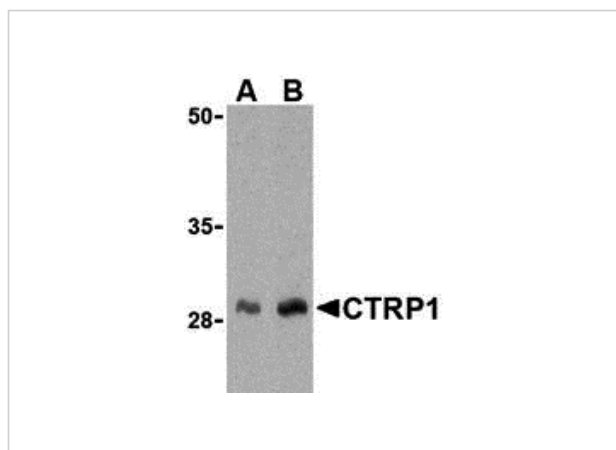
CATALOG NUMBER: 3557

### Specifications

Host Species	Rabbit
Species Reactivity	Human, Mouse, Rat
Immunogen	CTRP1 (NT) antibody was raised against a 15 amino acid synthetic peptide from near the amino-terminus of human CTRP1. The immunogen is located within amino acids 40 - 90 of CTRP1.
Conjugate	Unconjugated
Tested Applications	ELISA, IF, IHC-P, WB
User Note	Optimal dilutions for each application to be determined by the researcher.
Specificity	These proteins are often highly modified post-translationally and migrate in SDS-PAGE at positions other than their predicted size.

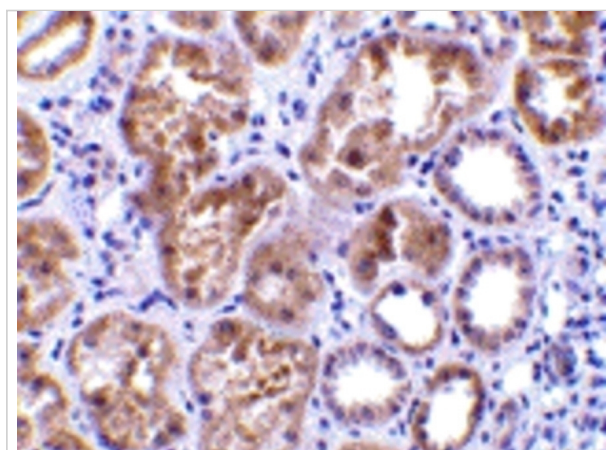
### Properties

Purification	CTRP1 Antibody is affinity chromatography purified via peptide column.
Clonality	Polyclonal
Isotype	IgG
Physical State	Liquid
Buffer	CTRP1 Antibody is supplied in PBS containing 0.02% sodium azide.
Concentration	1 mg/mL
Storage Conditions	CTRP1 antibody can be stored at 4°C for three months and -20°C, stable for up to one year. As with all antibodies care should be taken to avoid repeated freeze thaw cycles. Antibodies should not be exposed to prolonged high temperatures.



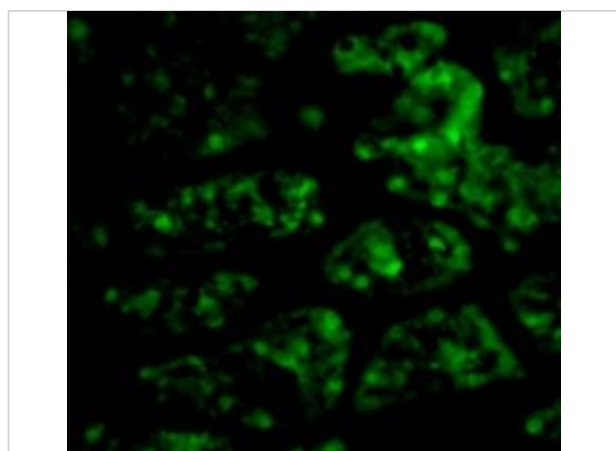
### CTRP1 Antibody 1

Western blot analysis of CTRP1 in human kidney cell lysate with CTRP1 antibody at (A) 1 and (B) 2  $\mu\text{g/mL}$ .



### CTRP1 Antibody 2

Immunohistochemistry of CTRP1 in human kidney tissue with CTRP1 antibody at 10  $\mu\text{g/mL}$ .



### CTRP1 Antibody 3

Immunofluorescence of CTRP1 in Human Kidney cells with CTRP1 antibody at 20  $\mu\text{g/mL}$ .

## Disclaimer

#### Disclaimer

Optimal dilutions/concentrations should be determined by the end user. The information provided is a guideline for product use. This product is for research use only.

For research use only. For additional information, visit ProSci's [Terms and Conditions Page](#).