

## KPNA7 Antibody

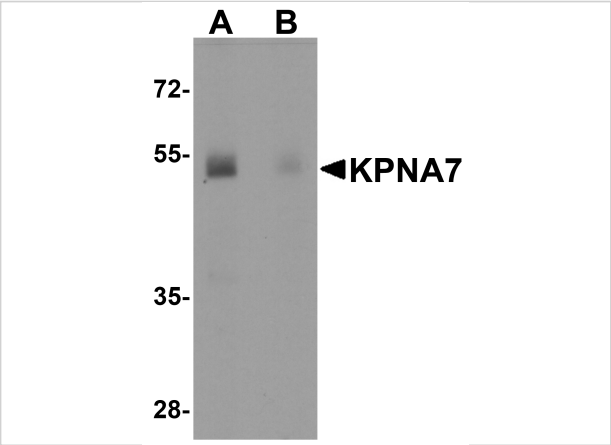
CATALOG NUMBER: 5993

### Specifications

Host Species	Rabbit
Species Reactivity	Human
Immunogen	KPNA7 antibody was raised against a 13 amino acid synthetic peptide near the amino terminus of human KPNA7. The immunogen is located within amino acids 40 - 90 of KPNA7.
Conjugate	Unconjugated
Tested Applications	ELISA, IHC-P, WB
User Note	Optimal dilutions for each application to be determined by the researcher.
Specificity	KPNA7 antibody is human specific. KPNA7 antibody is predicted to not cross-react with other Importin alpha family members.

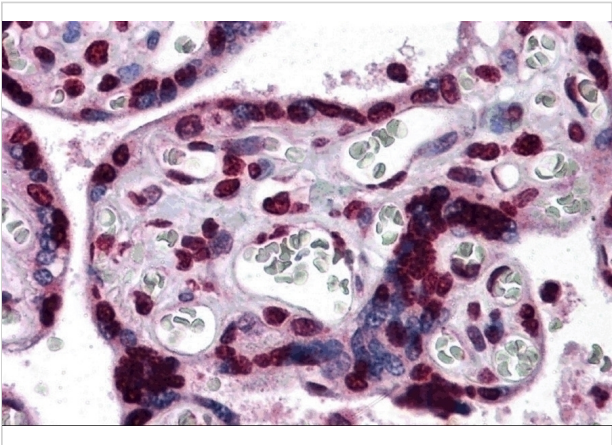
### Properties

Purification	KPNA7 Antibody is affinity chromatography purified via peptide column.
Clonality	Polyclonal
Isotype	IgG
Physical State	Liquid
Buffer	KPNA7 Antibody is supplied in PBS containing 0.02% sodium azide.
Concentration	1 mg/mL
Storage Conditions	KPNA7 antibody can be stored at 4°C for three months and -20°C, stable for up to one year. As with all antibodies care should be taken to avoid repeated freeze thaw cycles. Antibodies should not be exposed to prolonged high temperatures.



KPNA7 Antibody 1

Western blot analysis of KPNA7 in human spleen with KPNA7 antibody at 1 µg/ml in (A) the absence and (B) the presence of blocking peptide.



KPNA7 Antibody 2

Immunohistochemistry of KPNA7 in human placenta tissue with KPNA7 antibody at 5 µg/mL.

Disclaimer

Disclaimer	Optimal dilutions/concentrations should be determined by the end user. The information provided is a guideline for product use. This product is for research use only.
------------	--

For research use only. For additional information, visit ProSci's [Terms and Conditions Page](#).