

NALP11 Antibody

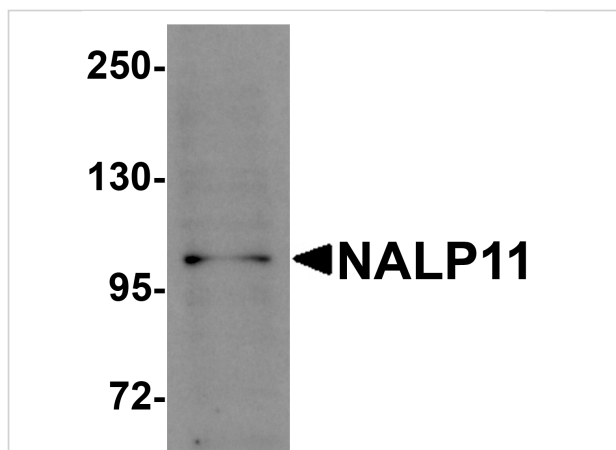
CATALOG NUMBER: 5969

Specifications

Host Species	Rabbit
Species Reactivity	Human
Immunogen	NALP11 antibody was raised against a 15 amino acid synthetic peptide near the carboxy terminus of human NALP11. The immunogen is located within the last 50 amino acids of NALP11.
Conjugate	Unconjugated
Tested Applications	ELISA, ICC, IF, WB
User Note	Optimal dilutions for each application to be determined by the researcher.

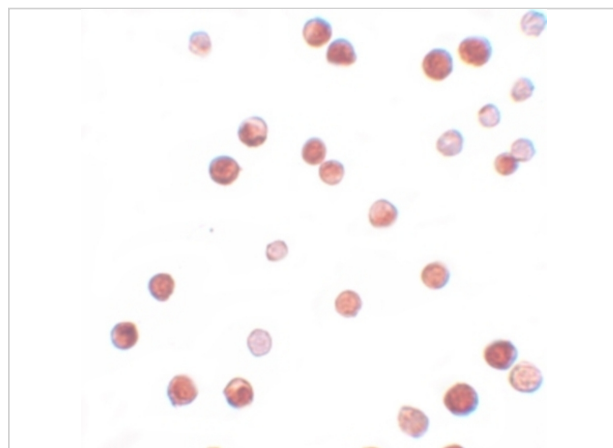
Properties

Purification	NALP11 Antibody is affinity chromatography purified via peptide column.
Clonality	Polyclonal
Isotype	IgG
Physical State	Liquid
Buffer	NALP11 Antibody is supplied in PBS containing 0.02% sodium azide.
Concentration	1 mg/mL
Storage Conditions	NALP11 antibody can be stored at 4°C for three months and -20°C, stable for up to one year. As with all antibodies care should be taken to avoid repeated freeze thaw cycles. Antibodies should not be exposed to prolonged high temperatures.



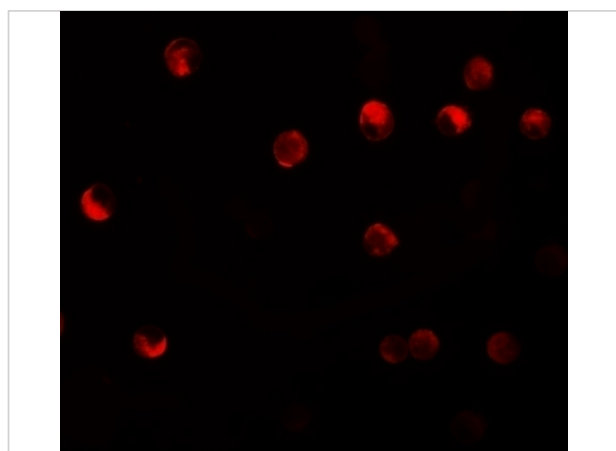
NALP11 Antibody 1

Western blot analysis of NALP11 in HeLa cell lysate with NALP11 antibody at 1 µg/mL.



NALP11 Antibody 2

Immunocytochemistry of NALP11 in HeLa cells with NALP11 antibody at 2.5 µg/mL.



NALP11 Antibody 3

Immunofluorescence of NALP11 in HeLa cells with NALP11 antibody at 20 µg/mL.

Disclaimer

Disclaimer

Optimal dilutions/concentrations should be determined by the end user. The information provided is a guideline for product use. This product is for research use only.

For research use only. For additional information, visit ProSci's [Terms and Conditions Page](#).