

Adiponectin Antibody

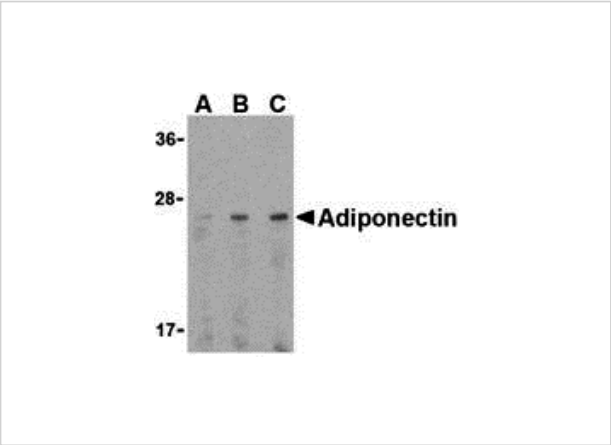
CATALOG NUMBER: 3551

Specifications

Host Species	Rabbit
Species Reactivity	Human, Mouse, Rat
Homology	Predicted species reactivity based on immunogen sequence: Bovine: (71%)
Immunogen	Adiponectin antibody was raised against a 15 amino acid synthetic peptide from near the carboxy terminus of human adiponectin. The immunogen is located within the last 50 amino acids of Adiponectin.
Conjugate	Unconjugated
Tested Applications	ELISA, IF, IHC-P, WB
User Note	Optimal dilutions for each application to be determined by the researcher.
Predicted Molecular Weight	Predicted: 27 kDa Observed: 26 kDa

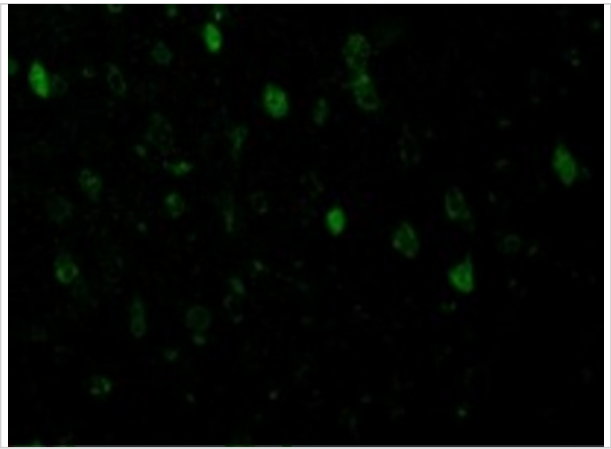
Properties

Purification	Adiponectin Antibody is affinity chromatography purified via peptide column.
Clonality	Polyclonal
Isotype	IgG
Physical State	Liquid
Buffer	Adiponectin Antibody is supplied in PBS containing 0.02% sodium azide.
Concentration	1 mg/mL
Storage Conditions	Adiponectin antibody can be stored at 4°C for three months and -20°C, stable for up to one year. As with all antibodies care should be taken to avoid repeated freeze thaw cycles. Antibodies should not be exposed to prolonged high temperatures.



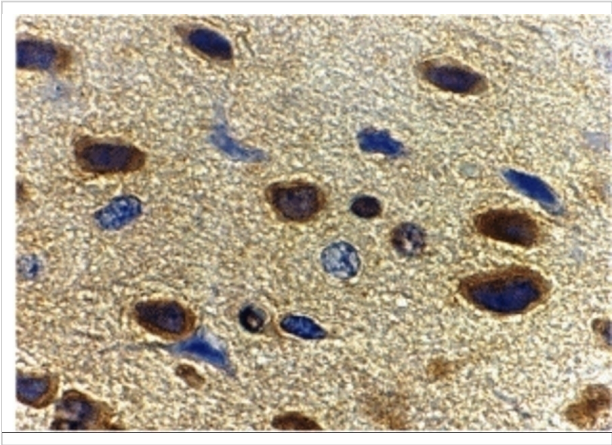
Adiponectin Antibody 1

Western blot analysis of adiponectin in HL60 cell lysate with adiponectin antibody at (A) 0.5, (B) 1, and (C) 2 $\mu\text{g/mL}$.



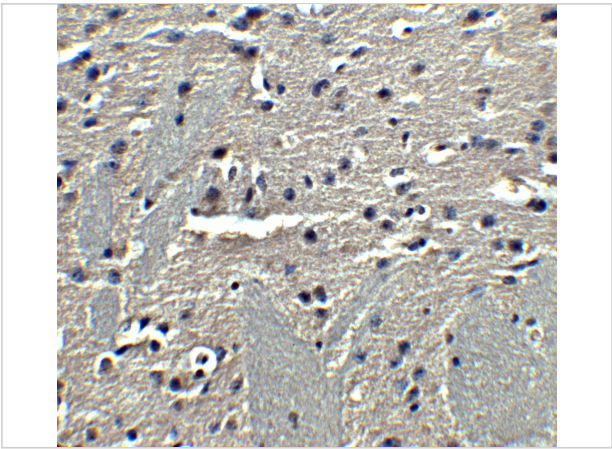
Adiponectin Antibody 3

Immunofluorescence of Adiponectin in Rat Brain cells with Adiponectin antibody at 10 $\mu\text{g/mL}$.



Adiponectin Antibody 2

Immunohistochemistry of adiponectin in rat brain tissue with adiponectin antibody at 10 $\mu\text{g/mL}$.



Adiponectin Antibody 4

Immunohistochemistry of Adiponectin in mouse brain tissue with Adiponectin antibody at 5 $\mu\text{g/mL}$.

Disclaimer

Disclaimer	Optimal dilutions/concentrations should be determined by the end user. The information provided is a guideline for product use. This product is for research use only.
-------------------	--

For research use only. For additional information, visit ProSci's [Terms and Conditions Page](#).