

## NALP5 Antibody

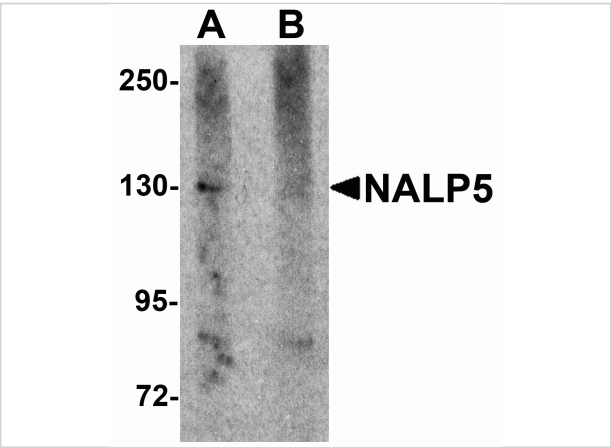
CATALOG NUMBER: 5959

### Specifications

Host Species	Rabbit
Species Reactivity	Human, Mouse, Rat
Immunogen	NALP5 antibody was raised against a 14 amino acid synthetic peptide near the carboxy terminus of human NALP5. The immunogen is located within the last 50 amino acids of NALP5.
Conjugate	Unconjugated
Tested Applications	ELISA, IF, IHC-P, WB
User Note	Optimal dilutions for each application to be determined by the researcher.

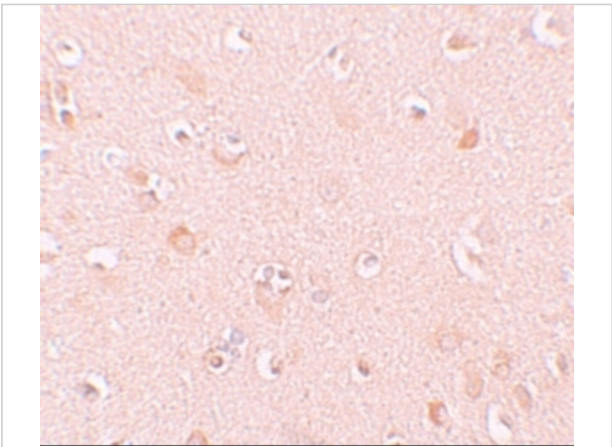
### Properties

Purification	NALP5 Antibody is affinity chromatography purified via peptide column.
Clonality	Polyclonal
Isotype	IgG
Physical State	Liquid
Buffer	NALP5 Antibody is supplied in PBS containing 0.02% sodium azide.
Concentration	1 mg/mL
Storage Conditions	NALP5 antibody can be stored at 4°C for three months and -20°C, stable for up to one year. As with all antibodies care should be taken to avoid repeated freeze thaw cycles. Antibodies should not be exposed to prolonged high temperatures.



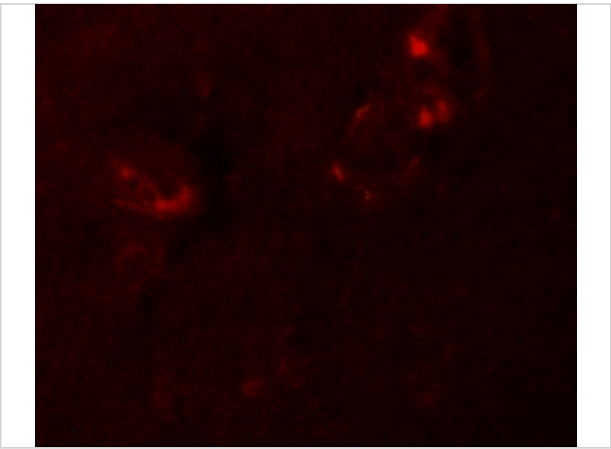
NALP5 Antibody 1

Western blot analysis of NALP5 in mouse brain tissue lysate with NALP5 antibody at 1 µg/mL in (A) the absence and (B) the presence of blocking peptide.



NALP5 Antibody 2

Immunohistochemistry of NALP5 in human brain tissue with NALP5 antibody at 10 µg/mL.



NALP5 Antibody 3

Immunofluorescence of NALP5 in human brain tissue with NALP5 antibody at 20 µg/mL.

Disclaimer

Disclaimer	Optimal dilutions/concentrations should be determined by the end user. The information provided is a guideline for product use. This product is for research use only.
------------	--

For research use only. For additional information, visit ProSci's [Terms and Conditions Page](#).