



ProSci Incorporated
12170 Flint Place
Poway, CA 92064, USA
prosci-inc.com

P: +1 (888) 513-9525
Local: +1 (858) 513-2638
Fax: +1 (858) 513-2692

customercare@prosci-inc.com
techsupport@prosci-inc.com

CRISP2 Antibody

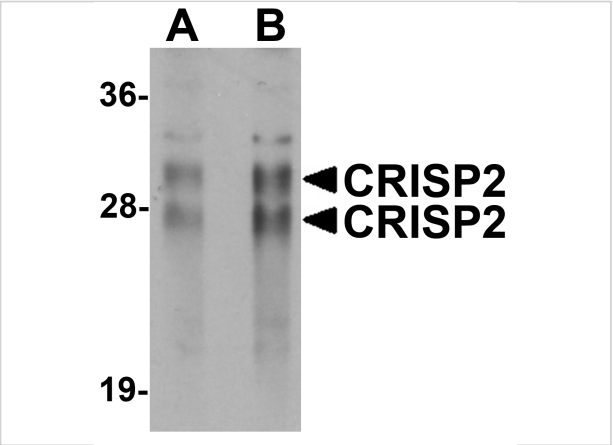
CATALOG NUMBER: 5873

Specifications

Host Species	Rabbit
Species Reactivity	Human
Immunogen	CRISP2 antibody was raised against a 15 amino acid synthetic peptide near the amino terminus of human CRISP2. The immunogen is located within the first 50 amino acids of CRISP2.
Conjugate	Unconjugated
Tested Applications	ELISA, IF, IHC-P, WB
User Note	Optimal dilutions for each application to be determined by the researcher.

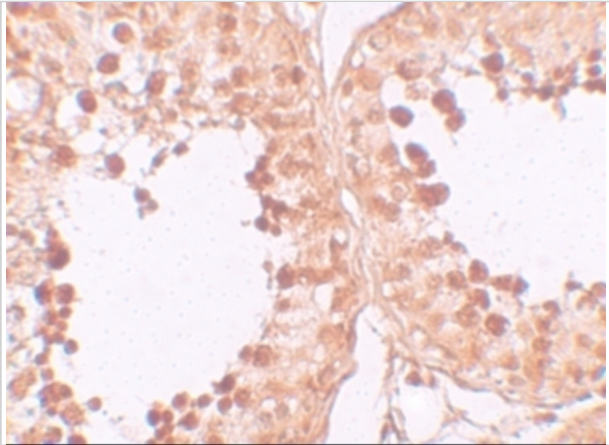
Properties

Purification	CRISP2 Antibody is affinity chromatography purified via peptide column.
Clonality	Polyclonal
Isotype	IgG
Physical State	Liquid
Buffer	CRISP2 Antibody is supplied in PBS containing 0.02% sodium azide.
Concentration	1 mg/mL
Storage Conditions	CRISP2 antibody can be stored at 4°C for three months and -20°C, stable for up to one year. As with all antibodies care should be taken to avoid repeated freeze thaw cycles. Antibodies should not be exposed to prolonged high temperatures.



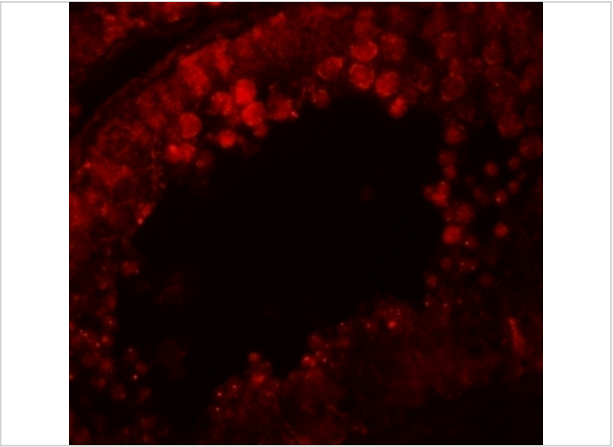
CRISP2 Antibody 1

Western blot analysis of CRISP2 in human testis tissue lysate with CRISP2 antibody at (A) 0.5 and (B) 1 $\mu\text{g/mL}$.



CRISP2 Antibody 2

Immunohistochemistry of CRISP2 in human testis tissue with CRISP2 antibody at 10 $\mu\text{g/mL}$.



CRISP2 Antibody 3

Immunofluorescence of CRISP in human testis tissue with CRISP antibody at 20 $\mu\text{g/mL}$.

Disclaimer

Disclaimer	Optimal dilutions/concentrations should be determined by the end user. The information provided is a guideline for product use. This product is for research use only.
-------------------	--

For research use only. For additional information, visit ProSci's [Terms and Conditions Page](#).