

AFP Antibody

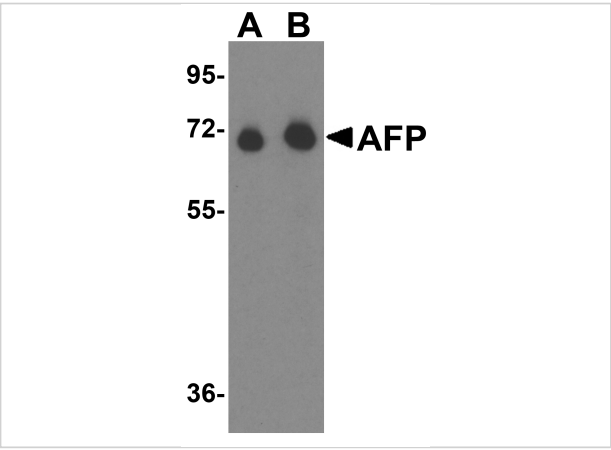
CATALOG NUMBER: 5869

Specifications

Host Species	Rabbit
Species Reactivity	Human, Mouse, Rat
Homology	Predicted species reactivity based on immunogen sequence: Pig: (91%), Sheep: (83%), Bovine: (83%)
Immunogen	AFP antibody was raised against a 14 amino acid synthetic peptide near the center of human AFP. The immunogen is located within amino acids 340 - 390 of AFP.
Conjugate	Unconjugated
Tested Applications	ELISA, IF, IHC-P, WB
User Note	Optimal dilutions for each application to be determined by the researcher.

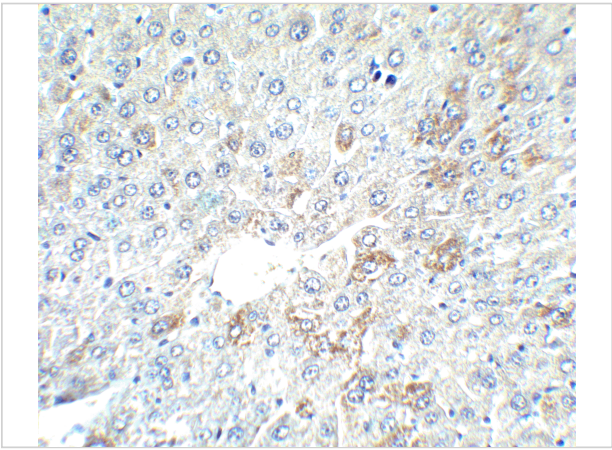
Properties

Purification	AFP Antibody is affinity chromatography purified via peptide column.
Clonality	Polyclonal
Isotype	IgG
Physical State	Liquid
Buffer	AFP Antibody is supplied in PBS containing 0.02% sodium azide.
Concentration	1 mg/mL
Storage Conditions	AFP antibody can be stored at 4°C for three months and -20°C, stable for up to one year. As with all antibodies care should be taken to avoid repeated freeze thaw cycles. Antibodies should not be exposed to prolonged high temperatures.



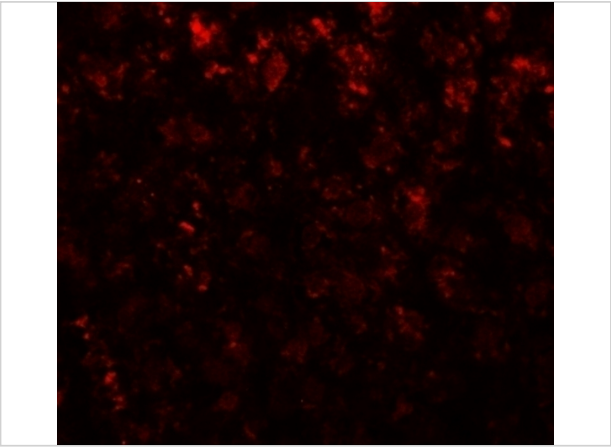
AFP Antibody 1

Western blot analysis of AFP in fetal human liver tissue lysate with AFP antibody at (A) 1 µg/mL and (B) 2 µg/mL.



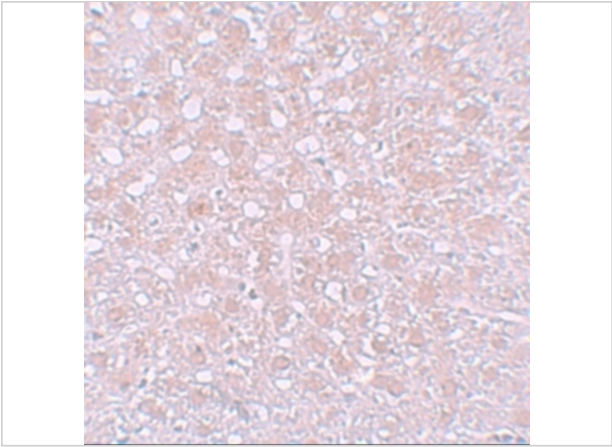
AFP Antibody 2

Immunohistochemistry of AFP in mouse liver tissue with AFP antibody at 2.5 µg/ml.



AFP Antibody 3

Immunofluorescence of AFP in rat liver tissue with AFP antibody at 20 µg/mL.



AFP Antibody 4

Immunohistochemistry of AFP in rat liver tissue with AFP antibody at 10 µg/mL.

Disclaimer

Disclaimer	Optimal dilutions/concentrations should be determined by the end user. The information provided is a guideline for product use. This product is for research use only.
------------	--

For research use only. For additional information, visit ProSci's [Terms and Conditions Page](#).